



Home Office

BUILDING A SAFE, JUST
AND TOLERANT SOCIETY

DWP Department for
Work and Pensions

 **HM Revenue
& Customs**



**Office of the
Deputy Prime Minister**

Creating sustainable communities

Accession Monitoring Report

May 2004 – March 2005

A joint online report by the Home Office, the Department for Work and Pensions, HM Revenue & Customs
and the Office of the Deputy Prime Minister.

26 May 2005

© Crown Copyright 2005

This publication is not available in printed format

INTRODUCTION

BACKGROUND	1
KEY FINDINGS	1
NOTE ON THE PUBLICATION	3
NOTE ON THE WORKER REGISTRATION SCHEME DATA	3
TECHNICAL NOTE	3

WORKER REGISTRATION SCHEME (WRS)

APPLICANTS AND APPLICATIONS TO THE WRS

1. Applicants.....	4
1.a. Applications.....	6

APPLICANT PROFILE

2. Nationality of applicants.....	7
3. Date applicants last entered the UK.....	9

PROFILE OF REGISTERED WORKERS

4. Age and Gender of registered workers.....	10
5. Dependants of registered workers.....	12
6. Sectors in which registered workers are employed.....	13
7. Occupations in which registered workers are employed.....	15
8. Registered workers' hours of work and wages.....	17
9. Proportion of registered workers in temporary/permanent employment.....	17
10. Geographical distribution of registered workers.....	18
11. Geographical distribution of registered workers by sector.....	20
12. Nationality of registered workers by sector.....	23

NATIONAL INSURANCE NUMBERS

13. National Insurance Numbers allocated and purpose of allocation.....	25
14. National Insurance Number applications by region.....	26

BENEFITS

15. Applications for tax-funded, income-related benefits.....	28
16. Nationality of applicants for tax-funded, income-related benefits.....	29
17. Applications for tax-funded, income-related benefits by region.....	29
18. Applications for Child Benefit.....	30
19. Applications for Tax Credits.....	31

HOUSING AND HOMELESSNESS SUPPORT

20. Local Authority Lettings.....	32
21. Homelessness assistance.....	32

ANNEX A	34
----------------------	----

INTRODUCTION

Background

On 1 May 2004, ten countries joined the European Union (EU). Those countries are: Cyprus; the Czech Republic; Estonia; Hungary; Latvia; Lithuania; Malta; Poland; Slovakia; and Slovenia. From that date, nationals of Malta and Cyprus have had full free movement rights and rights to work, throughout the European Union. Prior to enlargement, existing EU member states had the right to regulate access to their labour markets by nationals of the other eight countries – the 'Accession 8' or 'A8'. The UK Government put in place transitional measures to regulate A8 nationals' access to the labour market (via the Worker Registration Scheme) and to restrict access to benefits.

Key Findings

- Nationals from the Accession 8 countries continue to come to the UK to work, contributing to the success of the UK economy, whilst making very few demands of our welfare system or public services.
- In total there were 176 thousand applicants to the Worker Registration Scheme between 1 May 2004 and 31 March 2005, of whom up to a third may have already been in the UK before 1 May 2004. The figures show applications have fallen since their peak in June and July levelling out at between 13-14 thousand applications per month.
- Accession workers are continuing to go where the work is, helping to fill the gaps in our labour market, particularly in administration, business and management, hospitality and catering, agriculture, health and construction.
- In many cases Accession nationals are supporting the provision of public services in communities across the UK. Between July 2004 and March 2005, over 2,500 Accession country nationals registered as bus, lorry and coach drivers and more than 3,900 as care workers. There were over 485 teachers, researchers and classroom assistants; 190 dental practitioners (including hygienists and dental nurses); and over 200 GPs, hospital doctors, nurses and specialists.
- Just over a fifth of registered workers were based in London. However, workers are based all over the UK. The proportion applying to London fell from 26% in May and June 2004 to 17% in the first quarter 2005. At the same time the proportion applying elsewhere has increased, particularly in the Midlands (from 8% in May and June to 14% in first quarter of 2005).

Accession Monitoring Report, May 2004 – March 2005

- At least 96% of workers were working full time, and over 98% of applications for National Insurance numbers made by Accession country nationals between May 2004 and March 2005 were for employment purposes.
- The vast majority of workers are young and single, 82% of workers were aged between 18 and 34. 95% of registered workers had no dependants living with them in the UK, and only 2% had dependants under the age of 17 with them.
- The numbers applying for tax-funded income-related benefits, child benefit, tax credits and housing support remain very low. For example, fewer than 1,200 applications for Income Support and Jobseeker's Allowance were processed between May 2004 and March 2005, and of these applications fewer than 40 were allowed to proceed for further consideration.

Note on the publication

This is the third of a series of quarterly reports based on provisional Management Information collected through the Worker Registration Scheme and manual monitoring of applications for National Insurance Numbers, claims for benefits, applications for tax credits and applications for housing and homelessness assistance. The figures published in the earlier reports have been updated to include applications that were previously outstanding. Now that there is now 1 part quarter (May-June) and 3 whole quarters (July-September, October-December and January-March) available most of the data is presented in quarters although for continuity some of the headline tables are still shown as monthly data.

Note on the Worker Registration Scheme data

Nationals of the A8 countries who wish to take up employment in the UK are generally required to register with the Worker Registration Scheme. The data from the WRS provided here is data on applicants to the scheme rather than applications (with the exception of section 1.a.). Applicants must register more than once if they are employed by more than one employer. They must also re-register if they change employer. Each application to the WRS therefore represents one job, not one applicant. To avoid counting applicants more than once, each applicant is represented only once in this report – with information relating to the first job for which they registered.

Data is provisional and an estimated 685 applications from the period remain outstanding. In these cases final decisions had not been issued at the time of producing this report.

All WRS data in this report is sorted according to the date the applicant applied. The 'date applied' is the date the applicant puts on the application form. There will be cases in which there is a delay between when the forms are filled in or posted and when the applications are received by the Home Office.

Data on applicants to the Worker Registration Scheme (WRS) is not a measurement of net migration to the UK (inflows minus outflows): rather, it gives gross (cumulative) figures for the number of workers applying to the WRS. The figures are not current: an individual who has registered to work and who leaves employment is not required to de-register, so some of those counted will have left the employment for which they registered and indeed some are likely to have left the UK.

Technical Note

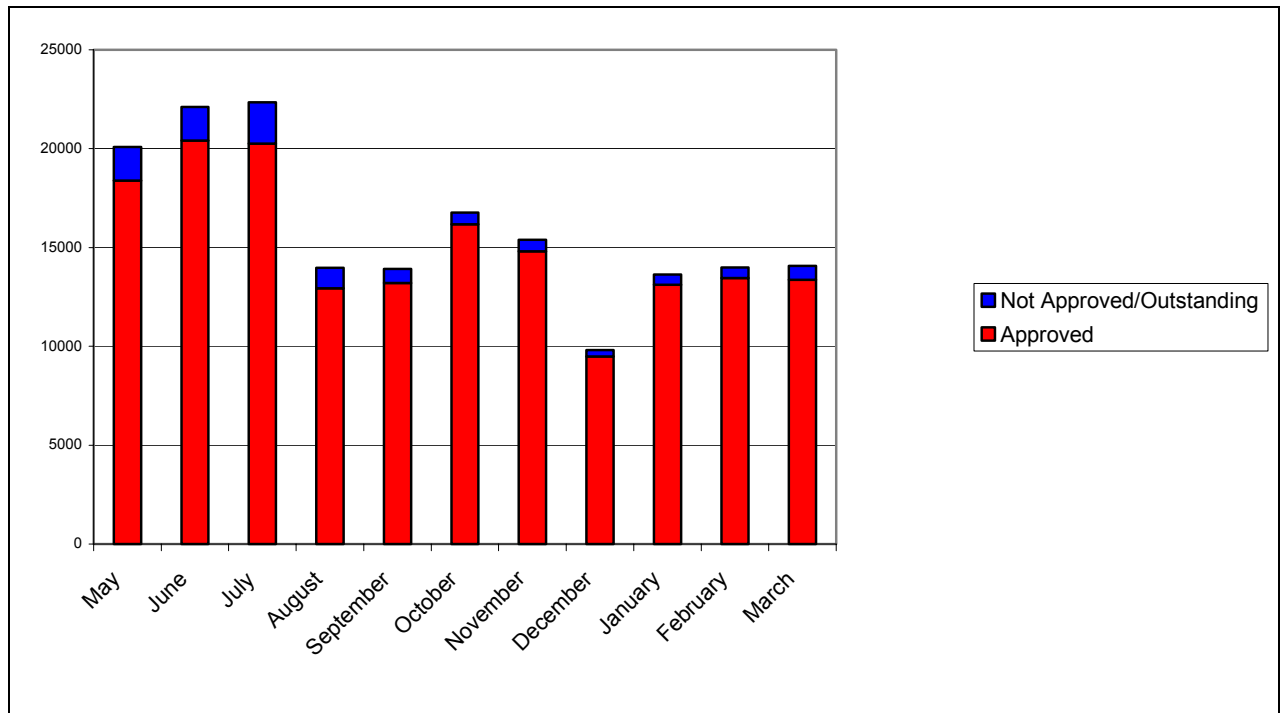
- All Worker Registration Scheme figures (other than percentages) are rounded to the nearest 5.
† indicates 1 or 2.
- Because of rounding, totals may not sum.
- All percentages are calculated from non-rounded figures.
- Q2 2004 is only a part quarter of May and June so care should be taken when comparing this with subsequent quarters.

WORKER REGISTRATION SCHEME (WRS)

Applicants and Applications to the WRS

1. Applicants

Chart 1: Applicants applied by month applied. May 2004 – March 2005



- In total there were 176 thousand applicants from 1 May 2004 to 31 March 2005, 166 thousand of whom were issued with Worker Registration certificates and cards.
- In the first 3 months applications peaked at over 20 thousand per month, it has since fluctuated slightly with a low of around 10 thousand applicants in December. However, it seems to have levelled off at between 13-14 thousand applicants per month in the first quarter of 2005.

Accession Monitoring Report, May 2004 – March 2005

Table 1: Applicants by month applied. May 2004 – March 2005.

	Approved	Refused ¹	Exempt ²	Withdrawn ³	SUB-TOTAL	Estimated Outstanding	TOTAL
May	18,395	360	110	1,215	20,075	5	20,080
June	20,420	190	165	1,330	22,105	5	22,110
July	20,265	205	190	1,685	22,345	†	22,345
August	12,930	115	40	890	13,980	5	13,985
September	13,210	110	40	535	13,895	10	13,905
October	16,175	105	50	420	16,755	15	16,770
November	14,810	90	25	440	15,370	15	15,385
December	9,485	65	20	235	9,800	20	9,820
January	13,115	110	40	290	13,550	75	13,625
February	13,450	110	45	245	13,850	140	13,990
March	13,370	80	35	205	13,685	390	14,075
TOTAL	165,620	1,540	760	7,490	175,410	685	176,095

This table shows applicants rather than the number of applications made. The figures are for initial applications only (not multiple applications, where an individual is doing more than one job simultaneously, nor re-registrations, where an individual has changed employers).

Note: Please see Introduction: Technical Note on WRS data

¹ 'Refused': Grounds for refusal include no evidence of employment, insufficient evidence of citizenship of one of the A8 countries.

² 'Exempt': Under the Accession (Immigration and Worker Registration) Regulations 2004, certain categories of A8 national are exempt from the requirement to register (e.g. those who have been employed legally in the UK for 12 months or more, without interruption).

³ 'Withdrawn': The applicant withdrew their application.

Accession Monitoring Report, May 2004 – March 2005

1.a. Applications

- A total of 204 thousand applications, excluding outstanding applications, were made between May 2004 and March 2005, of which 193 thousand were approved (i.e. the worker's employment was registered).
- The total includes almost 20 thousand applications to re-register (from those who have previously registered but have changed employer), 2 thousand multiple registrations (from those working for more than one employer simultaneously), and over 6 thousand multiple re-registrations (from those registering for subsequent, additional jobs, or those who have left their employer and are re-registering for more than one job). These applications account for the difference between the number of applicants and the number of applications.
- Over the reporting period, the number of re-registrations has risen from 260 in May to 3,000 a month in the final quarter. The number of multiple registrations has fallen from 700 in May to fewer than 100 in February and March.

Table 1.a.: Multiple applications and Re-registrations. May 2004 – March 2005.

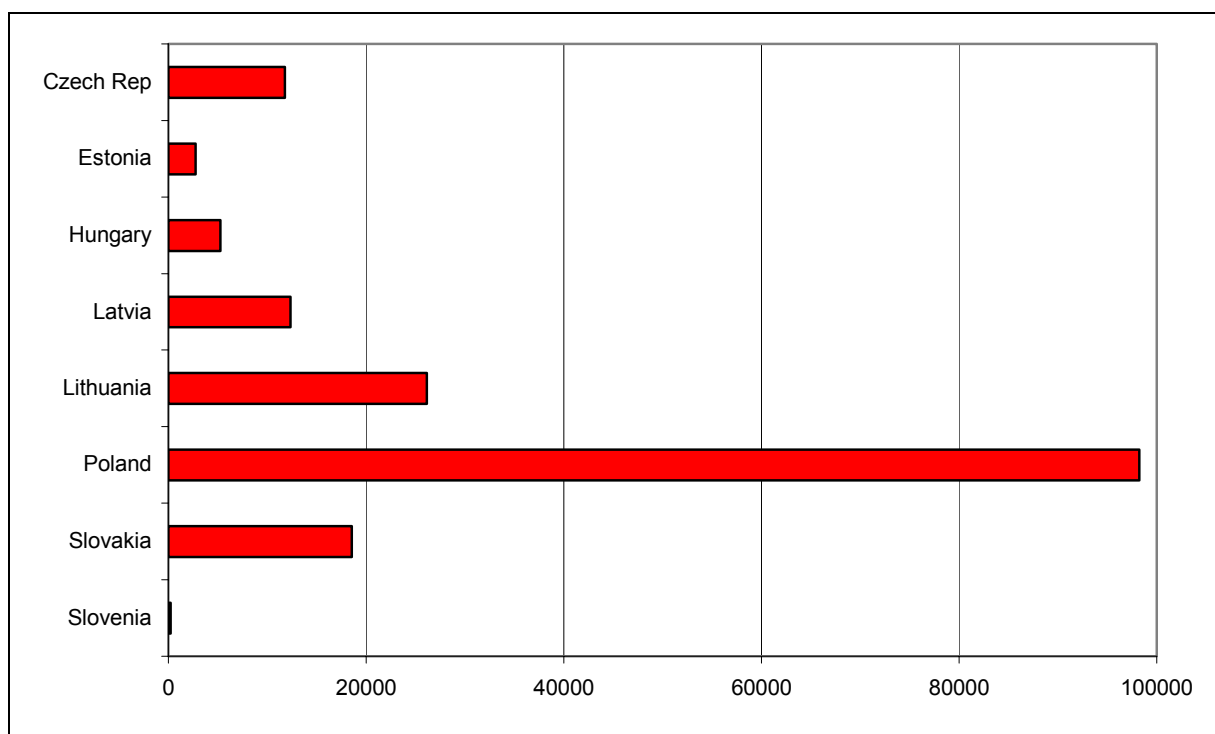
	Multiple	Re-registration	Multiple Re-registration	TOTAL
May	705	260	460	1,425
June	370	275	460	1,105
July	250	630	515	1,395
August	135	900	400	1,435
September	155	1,410	435	1,995
October	140	2,105	585	2,830
November	165	2,450	520	3,135
December	80	2,075	465	2,625
January	120	2,985	565	3,670
February	95	3,250	685	4,030
March	60	3,330	1,065	4,460
TOTAL	2,275	19,670	6,165	28,110

Note: Please see Introduction: Technical Note on WRS data

Applicant Profile

2. Nationality of applicants

Chart 2: Nationality of applicants: May 2004 – March 2005.



- In the period 1 May 2004 to 31 March 2005, the highest proportion of applicants were Polish (56% of the total), followed by Lithuanian (15%) and Slovak (11%) applicants. These proportions have remained roughly constant throughout the period.

Accession Monitoring Report, May 2004 – March 2005

Table 2: Nationality of applicants by month applied. May 2004 – March 2005.

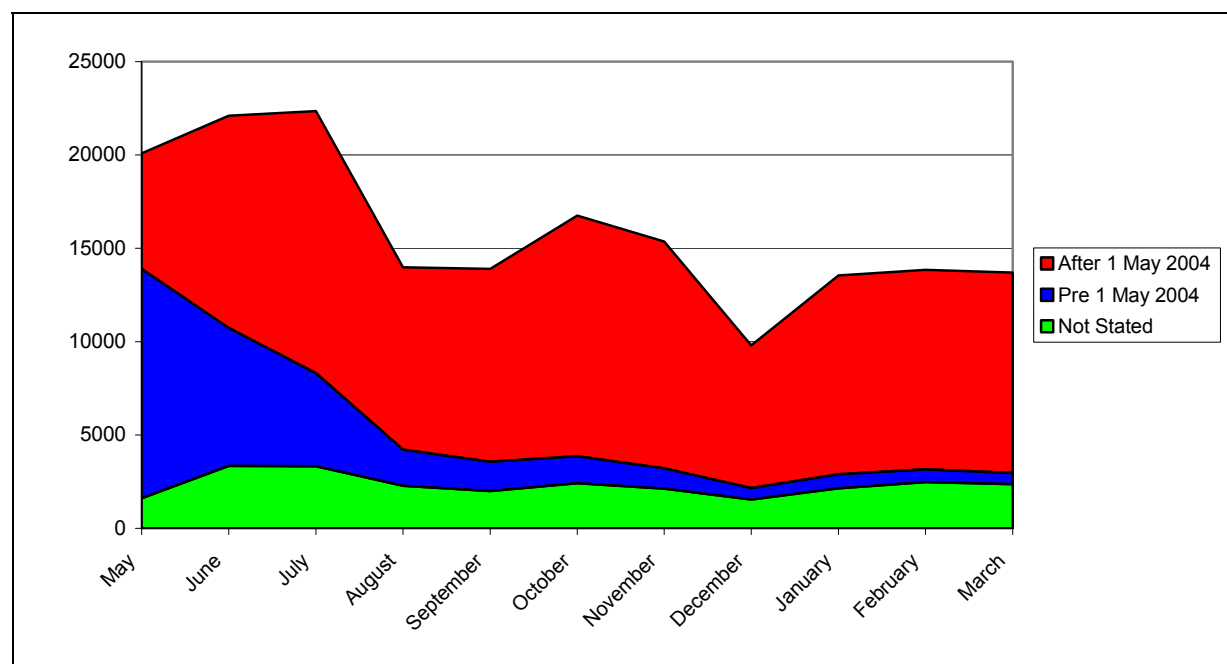
	Czech	Estonian	Hungarian	Latvian	Lithuanian	Polish	Slovak	Slovenian	Other	TOTAL
May	1,240	290	550	1,290	3,570	11,590	1,510	25	10	20,075
June	1,275	370	540	1,645	4,140	11,870	2,215	25	25	22,105
July	1,505	365	510	1,690	3,840	12,250	2,140	25	25	22,345
August	960	175	365	1,015	1,840	8,055	1,540	25	5	13,980
September	1,040	230	445	950	1,905	7,745	1,555	15	10	13,895
October	1,190	230	575	1,145	2,280	9,370	1,935	25	5	16,755
November	1,160	260	540	980	1,780	8,940	1,685	20	10	15,370
December	660	120	310	630	1,265	5,550	1,240	10	10	9,800
January	955	260	460	970	1,855	7,525	1,495	15	15	13,550
February	880	200	475	1,030	1,905	7,745	1,595	20	5	13,855
March	905	240	480	1,010	1,770	7,600	1,655	20	10	13,685
TOTAL	11,775	2,740	5,250	12,355	26,145	98,235	18,565	220	135	175,410
As % of Total	7%	2%	3%	7%	15%	56%	11%	<0.5%	<0.5%	100%

This table shows applicants rather than the number of applications made. The figures are for initial applications only (not multiple applications, where an individual is doing more than one job simultaneously, nor re-registrations, where an individual has changed employers).

Note: Please see Introduction: Technical Note on WRS data

3. Date applicants last entered the UK⁴

Chart 3: Date applicants last entered the UK, by month applied. May 2004 – March 2005.



- Between May and March, 19% of applicants reported that they had entered the UK prior to 1 May 2004. 66% reported that they had entered on or after 1 May, and 15% did not state their arrival date.

Table 3: Date applicants entered UK, by month applied. May 2004 – March 2005.

	Pre-2002	2002	2003	Jan-Apr 2004	Post 1 May 2004	Not stated	TOTAL
May	860	1,015	4,495	5,915	6,185	1,610	20,075
June	580	640	2,540	3,630	11,375	3,345	22,105
July	530	460	1,830	2,170	14,035	3,330	22,345
August	230	210	670	825	9,760	2,285	13,980
September	215	165	535	650	10,330	1,995	13,895
October	195	165	460	630	12,890	2,425	16,755
November	185	130	325	460	12,150	2,130	15,370
December	145	70	190	225	7,625	1,550	9,800
January	160	90	225	275	10,650	2,145	13,550
February	125	75	210	275	10,690	2,480	13,850
March	140	65	195	195	10,735	2,365	13,685
TOTAL	3,350	3,080	11,670	15,250	116,420	25,665	175,410

This table shows applicants rather than the number of applications made. The figures are for initial applications only (not multiple applications, where an individual is doing more than one job simultaneously, nor re-registrations, where an individual has changed employers).

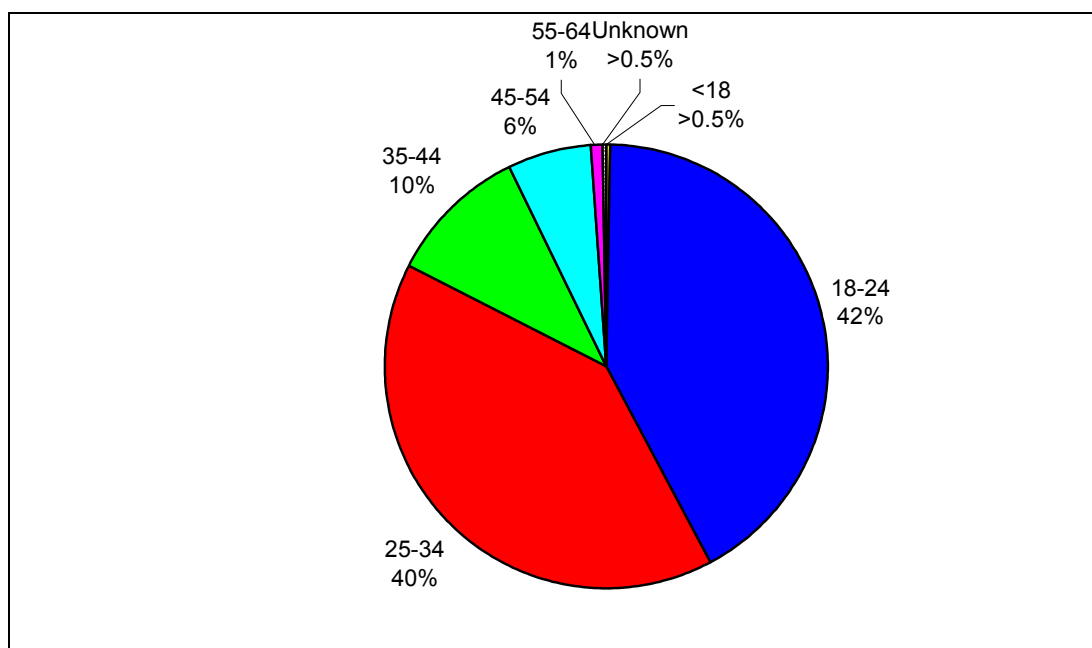
Note: Please see Introduction: Technical Note on WRS data

⁴ This data is derived from applicants' responses to the question on the WRS application form: "When did you last enter the UK?" The Home Office does not verify these responses.

Profile of Registered Workers

4. Age and Gender of registered workers

Chart 4: Age of registered workers. May 2004 – March 2005.



- Of those who applied between May 2004 and March 2005, 82% of registered workers were aged 18 – 34. This percentage has been fairly consistent across the period, although there were more people in the younger 18-24 bracket during the summer months of June to August.

Table 4: Age of registered workers. May 2004 – March 2005.

	Q2 2004	Q3 2004	Q4 2004	Q1 2005	TOTAL	As % of total
Under 18	100	140	80	95	420	<0.5%
18-24	16,150	21,945	16,195	15,345	69,635	42%
25-34	16,155	17,015	16,585	16,710	66,465	40%
35-44	3,740	4,375	4,495	4,725	17,330	10%
45-54	2,250	2,510	2,655	2,655	10,065	6%
55-64	335	325	350	340	1,355	1%
65 +	5	5	10	10	25	<0.5%
Unknown	80	80	100	65	330	<0.5%
TOTAL	38,815	46,405	40,470	39,935	165,620	100%

This table shows registered workers rather than the number of applications made. The figures are for initial applications only (not multiple applications, where an individual is doing more than one job simultaneously, nor re-registrations, where an individual has changed employers).

Note: Please see Introduction: Technical Note on WRS data

Accession Monitoring Report, May 2004 – March 2005

- The Male:Female ratio for those who applied between May 2004 and March 2005 was 56:44. However this proportion has increased from a ratio of 53:47 in the first quarter after accession to 60:40 in the first quarter of 2005.

5. Dependants of registered workers⁵

- A very small minority (5%) of registered workers who applied between May 2004 and March 2005 had dependants living with them in the UK. Amongst those who did have dependants, the average number of dependants was 1.3.
- The number of dependants as a proportion of the number of registered workers has remained roughly consistent throughout the period.

Table 5: Registered workers' dependants. Total, May 2004 – March 2005.

	Total registered workers	Registered workers with dependants	Number of dependants		
			Under 17	17 and over	TOTAL
Q2 2004	38,815	1,900	1,340	1,120	2,460
Q3 2004	46,405	2,155	1,465	1,315	2,785
Q4 2004	40,470	2,575	1,640	1,620	3,255
Q1 2005	39,935	2,325	1,545	1,425	2,970
TOTAL	165,620	8,960	5,990	5,480	11,470

This table shows registered workers rather than the number of applications made. The figures are for initial applications only (not multiple applications, where an individual is doing more than one job simultaneously, nor re-registrations, where an individual has changed employers).

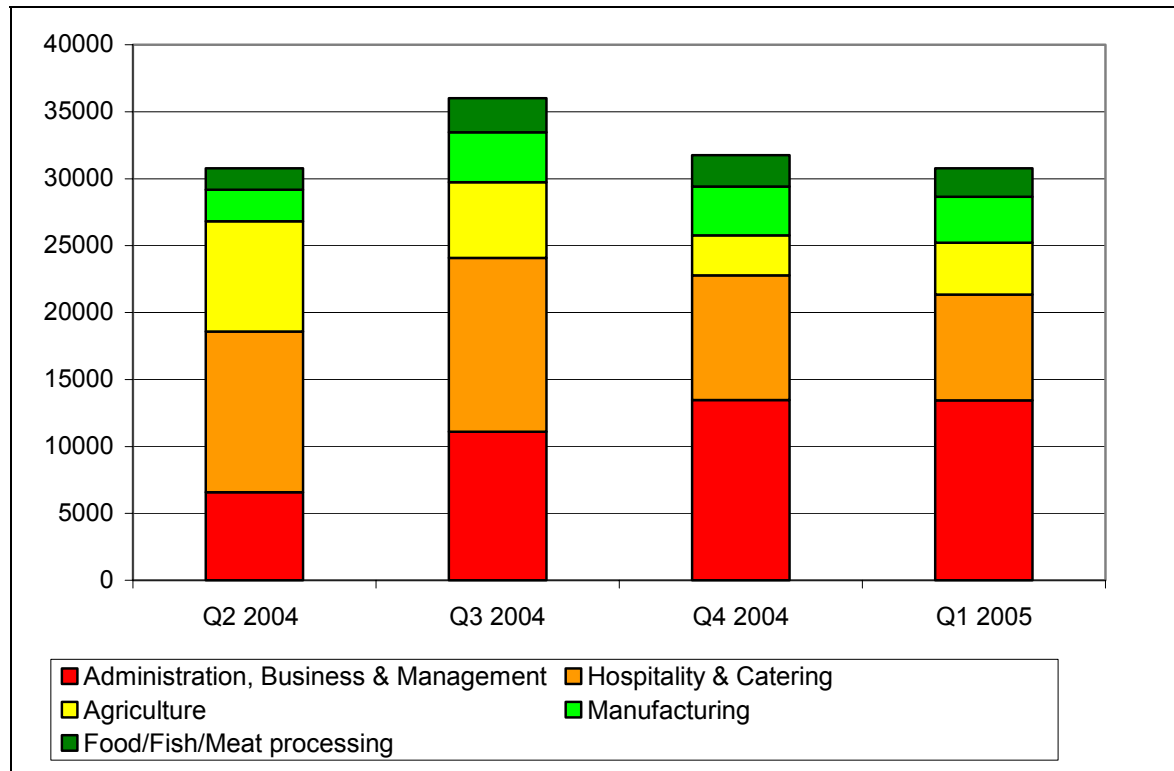
Note: it is likely that there is some 'double counting' of dependants, in the sense that some of those recorded as dependants (particularly older children and spouses) may also have registered in their own right to work in the UK.

Note: Please see Introduction: Technical Note on WRS data

⁵ This data is derived from applicants' responses to the question on the WRS application form: "If your dependants (children and/or spouse or partner) are living with you in the UK, how many of them are: Aged 16 or under?" and "Aged 17 or above?" The Home Office does not verify these responses.

6. Sectors in which registered workers are employed

Chart 5: Top 5 sectors in which registered workers are employed, by month applied. May 2004 – March 2005.



- The top five sectors, for registered workers who applied between May 2004 to March 2005, were Administration, Business & Management (27%), Hospitality & Catering (25%), Agriculture (13%), Manufacturing (8%) and Food, Fish and Meat Processing (5%).
- Administration, Business & Management has overtaken Hospitality & Catering as the sector that employs the most accession workers. The proportion of workers in the Administration, Business & Management sector increased from 17% in Q2 2004 to a third in the latest two quarters. Meanwhile, the proportion in Hospitality and Catering fell from 31% in Q2 2004 to just 20% in Q1 2005.
- Agriculture is the other sector where there has been a considerable change over the period. The proportion of workers who were employed in Agriculture peaked in Q2 2004 at 21% before falling to 7% in Q4 2004 although it did rise again slightly in the last quarter.

Accession Monitoring Report, May 2004 – March 2005

Table 6: Sectors in which registered workers are employed, by quarter applied. May 2004 – March 2005.

	Q2 2004	Q3 2004	Q4 2004	Q1 2005	TOTAL
Administration, Business & Management	6,585	11,085	13,465	13,435	44,570
Hospitality & Catering	11,990	12,965	9,305	7,905	42,165
Agriculture	8,235	5,655	2,995	3,870	20,755
Manufacturing	2,360	3,745	3,625	3,420	13,145
Food/Fish/Meat processing	1,585	2,540	2,340	2,145	8,610
Health & Medical	1,170	2,220	2,155	2,220	7,770
Retail	1,540	1,950	1,855	1,775	7,125
Construction & Land	1,710	1,990	1,475	1,575	6,750
Transport	600	910	1,205	1,455	4,175
Entertainment & Leisure	790	950	450	845	3,030
Education & Cultural	460	545	490	435	1,925
Real Estate & Property	155	205	170	235	770
Financial Services	135	160	130	110	540
Computer Services	130	120	135	100	485
Extraction Industries	75	145	145	80	450
Security and Protection	95	115	130	95	440
Telecommunications	55	60	60	80	255
Sporting activities	45	60	45	35	185
Utilities (Gas, Electricity, Water)	35	50	40	35	160
Government	35	30	25	20	105
Law-related Services	20	30	25	25	105
Government	990	850	190	80	2,110
TOTAL	38,815	46,405	40,470	39,935	165,620

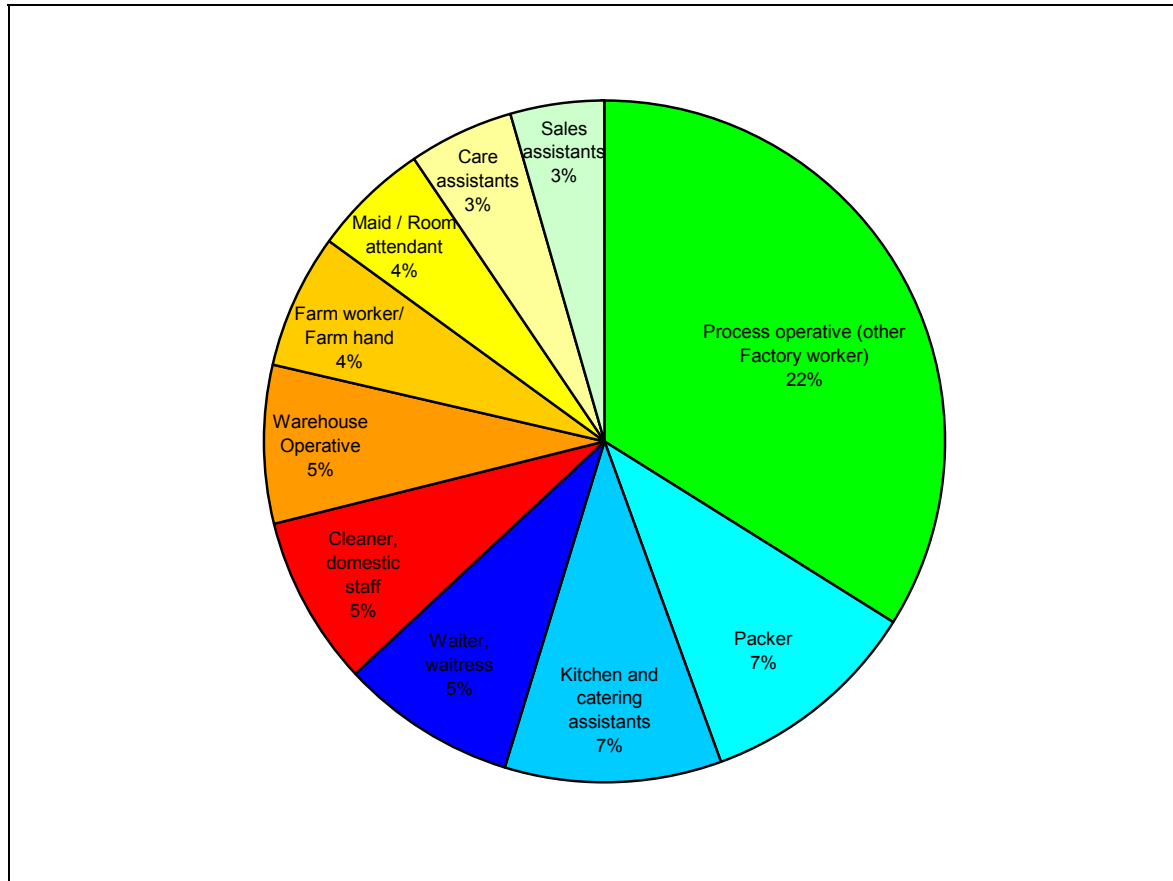
This table shows registered workers rather than the number of applications made. The figures are for initial applications only (not multiple applications, where an individual is doing more than one job simultaneously, nor re-registrations, where an individual has changed employers).

Note: Please see Introduction: Technical Note on WRS data

7. Occupations in which registered workers are employed

Chart 6: Top 10 occupations in which registered workers are employed. July 2004 – March 2005.

(May/June data not available)



Note: Percentages indicate percentage of all workers registered, July to December.

- The top 20 occupations have remained largely consistent over the period.
- The largest proportion of workers (22%) are in general occupations classified as Process operatives (other factory worker). This is followed by Packers (7%) and Kitchen and catering assistants (7%).
- Please refer to **Annex A** for a full table of occupations of registered workers who applied between July 2004 and March 2005.

Accession Monitoring Report, May 2004 – March 2005

Table 7: Top 20 occupations in which registered workers are employed, by month applied. July 2004 – March 2005 (May/June data not available)

	Q3 2004	Q4 2004	Q1 2005	TOTAL
Process operative (other Factory worker)	8,115	9,775	9,460	27,355
Packer	2,605	2,900	2,930	8,435
Kitchen and catering assistants	3,240	2,690	2,405	8,335
Waiter, waitress	2,910	2,065	1,670	6,645
Cleaner, domestic staff	2,340	2,015	2,090	6,440
Warehouse Operative	1,505	2,295	2,330	6,125
Farm worker/ Farm hand	2,215	1,130	1,660	5,005
Maid / Room attendant (hotel)	1,865	1,505	1,270	4,640
Care assistants and home carers	1,215	1,360	1,325	3,900
Sales and retail assistants	1,325	1,210	1,085	3,620
Labourer, building	1,170	905	1,100	3,180
Bar staff	1,150	795	645	2,595
Food processing operative (fruit / veg)	800	795	675	2,275
Food processing operative (meat)	805	715	545	2,065
Chef, other	800	580	530	1,910
Crop harvester	955	280	595	1,830
Administrator, general	535	460	385	1,380
Driver, HGV (Heavy Goods Vehicle)	300	430	540	1,265
Hotel porter	385	325	250	960
Driver, delivery van	265	320	330	915
TOTAL 20	34,240	32,235	31,485	97,965
Total Other	12,165	8,235	8,465	28,870
GGRAND TOTAL	46,405	40,470	39,935	126,810

This table shows registered workers rather than the number of applications made. The figures are for initial applications only (not multiple applications, where an individual is doing more than one job simultaneously, nor re-registrations, where an individual has changed employers).

Note: Please see Introduction: Technical Note on WRS data

8. Registered workers' hours of work⁶ and wages⁷

- 96% of registered workers who applied between May 2004 and March 2005 were working full time (more than 16 hours a week)⁸.
- The vast majority (80%) of registered workers were earning £4.50 - £5.99 per hour.

9. Proportion of registered workers in temporary/permanent employment⁹

- For those who applied in the period from May 2004 to March 2005, 45% of registered workers were in temporary employment and 52% were in permanent employment (3% did not provide this information).
- The proportion of registered workers employed on a temporary or permanent basis varied considerably from sector to sector. In Agriculture, 63% were in temporary employment and 33% in permanent employment. In Administration, Business and Management, 82% were in temporary employment and 15% in permanent employment. In Hospitality and Catering the pattern was reversed, with only 19% in temporary employment and 78% in permanent employment.

⁶ This data is derived from applicants' responses to the question on the WRS application form: "How many hours per week do you normally work?" The Home Office does not verify these responses.

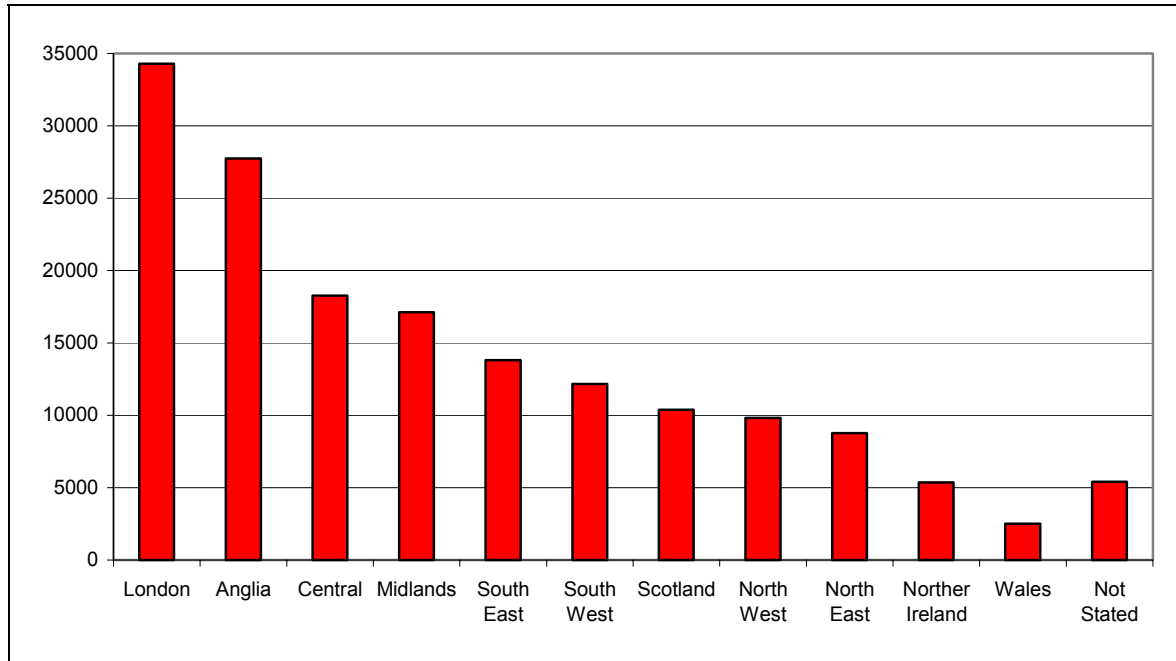
⁷ This data is derived from applicants' responses to the question on the WRS application form: "How much is your hourly rate, before deductions?" The Home Office does not verify these responses.

⁸ The 96% is likely to be an underestimate. The proportion of registered workers working part time is likely to be lower than 4%, because some were doing more than one part time job, simultaneously. The data published here only takes account of one of those jobs – so the total hours an individual was working will in some cases be more than 16.

⁹ This data is derived from applicants' responses to the question on the WRS application form: "What type of employment are you undertaking? (Please indicate by ticking the appropriate box)." The Home Office does not verify these responses.

10. Geographical distribution of registered workers¹⁰

Chart 7: Geographical distribution of registered workers. May 2004 – March 2005.



- London has had the greatest number of workers registering during the May 2004 to March 2005 period with 21% of the total. This is followed by the Anglia and South Central Regions with 17% and 11% of the total respectively.
- Northern Ireland and Wales had the fewest registrations with 3% and 2% of the total respectively.
- The proportion applying to London however fell from 26% in Q2 2004 to just 17% in Q1 2005. At the same time the proportion applying elsewhere has increased particularly the Midlands from 8% in Q2 2004 to 14% in Q1 2005.

¹⁰ Regions are based on the applicant's employer's postcode, where supplied. Regions are defined according to the Post Office's Postal Address Book regions.

Accession Monitoring Report, May 2004 – March 2005

Table 8: Geographical distribution of registered workers. May 2004 – March 2005.

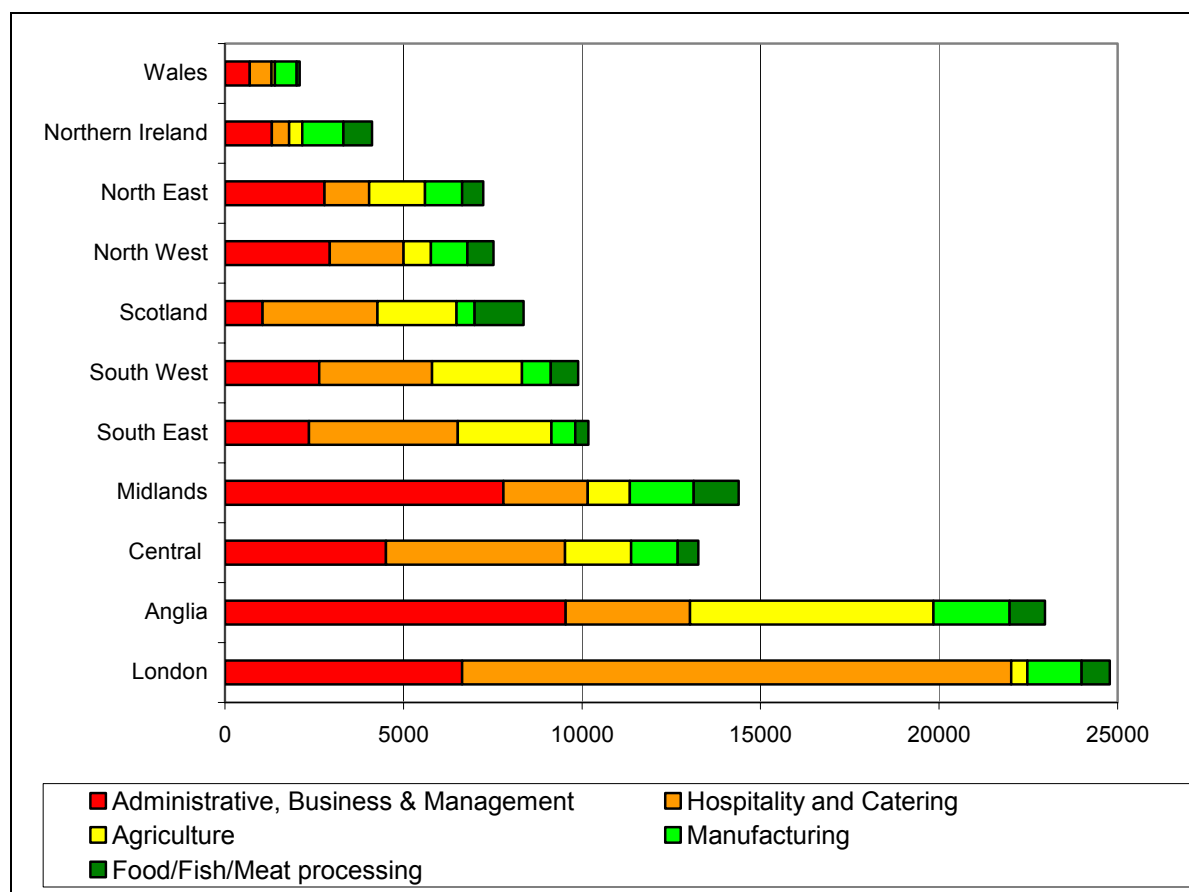
	Q2 2004	Q3 2004	Q4 2004	Q1 2005	TOTAL
London	9,975	9,875	7,780	6,630	34,255
Anglia	7,945	7,845	6,075	5,860	27,720
Central	4,835	4,785	4,245	4,390	18,255
Midlands	2,930	4,220	4,535	5,415	17,100
South East	3,930	4,350	2,910	2,630	13,820
South West	2,480	3,550	2,965	3,170	12,170
Scotland	2,250	3,255	2,640	2,230	10,375
North West	1,390	2,825	2,675	2,940	9,830
North East	1,175	2,325	2,610	2,670	8,780
Northern Ireland	745	1,330	1,555	1,740	5,370
Wales	445	595	635	835	2,510
Not Stated	700	1,440	1,840	1,435	5,415
TOTAL	38,815	46,405	40,470	39,935	165,620

This table shows registered workers rather than the number of applications made. The figures are for initial applications only (not multiple applications, where an individual is doing more than one job simultaneously, nor re-registrations, where an individual has changed employers).

Note: Please see Introduction: Technical Note on WRS data

11. Geographical distribution of registered workers by sector¹¹

Chart 8: Top 5 sectors – geographical distribution of registered workers. Cumulative total, May 2004 – March 2005.



Trends within sectors

- 36% of those working in Hospitality and Catering were in London – far more than in any other region. The next highest proportions were working in South Central England and the South East (12% and 10% respectively).
- 33% of those working in Agriculture were in Anglia, followed by the South East (13%), whereas only 2% of Agriculture workers were in London.
- 21% of those working in Administration, Business and Management were in Anglia, 17% were in the Midlands and 15% were in London.

¹¹ Regions are based on the applicant's employer's postcode, where supplied. Regions are defined according to the Post Office's Postal Address Book regions.

Trends within regions

- 45% of those located in London were working in Hospitality and catering, and 31% of those working in Scotland, but only 13% in Anglia and 9% in Northern Ireland.
- 46% of those located in the Midlands were working in Administration, Business and Management, as were 34% of those in Anglia, but only 17% in the South East and 10% in Scotland.
- Other noticeable trends include 25% of those in Anglia working in Agriculture, and 24% of those in Wales working in Manufacturing.

Accession Monitoring Report, May 2004 – March 2005

Table 9: Top 10 sectors – geographical distribution of registered workers. Cumulative total, May 2004 – March 2005.

	London	Anglia	Central	Midlands	South East	South West	Scotland	North West	North East	Northern Ireland	Wales	Unknown*	TOTAL
Administrative, Business & Management	6,640	9,545	4,505	7,800	2,355	2,640	1,050	2,935	2,785	1,315	695	2,340	44,605
Hospitality and Catering	15,380	3,480	5,015	2,360	4,165	3,160	3,220	2,065	1,250	485	610	1,010	42,195
Agriculture	460	6,820	1,850	1,180	2,620	2,520	2,215	765	1,565	365	100	305	20,760
Manufacturing	1,520	2,135	1,300	1,795	670	810	505	1,030	1,050	1,150	605	585	13,145
Food/Fish/Meat processing	790	990	585	1,255	360	765	1,370	725	585	800	90	295	8,610
Health and Medical	1,450	975	1,210	400	1,080	685	600	340	490	195	135	210	7,770
Retail	2,615	1,035	840	550	655	290	220	325	185	170	50	195	7,125
Construction and land	1,415	765	1,065	400	630	340	585	500	295	580	45	135	6,755
Transport	600	685	425	625	330	320	180	505	220	160	25	95	4,175
Entertainment and Leisure	830	315	425	225	250	275	105	345	105	20	85	55	3,030
TOTAL (10)	31,695	26,740	17,220	16,590	13,115	11,800	10,050	9,530	8,525	5,245	2,430	5,225	158,170
Total (Others / Unknown)	2,565	980	1,040	510	700	370	325	300	255	125	75	190	7,450
GRAND TOTAL	34,255	27,720	18,255	17,100	13,820	12,170	10,375	9,830	8,780	5,370	2,510	5,415	165,620

This table shows registered workers rather than the number of applications made. The figures are for initial applications only (not multiple applications, where an individual is doing more than one job simultaneously, nor re-registrations, where an individual has changed employers).

*Postcode not supplied

Note: Regions are defined according to the Post Office's Postal Address Book regions. Data is based on employer's postcode, where supplied.

Note: Please see Introduction: Technical Note on WRS data

12. Nationality of registered workers by sector

Chart 9: Top 5 sectors – Nationality of registered workers. Cumulative total, May 2004 – March 2005.



- Polish workers made up the largest proportion in every sector. Especially hospitality and catering where 60% of all workers were from Poland this compares to 56% of workers in all sectors.
- In Agriculture only 49% of workers were Polish with 26% being from Lithuania, a higher proportion than in any other sector. There were also a higher proportion of Latvians in Agriculture than in any other sector 14% compared to 7% overall.

Accession Monitoring Report, May 2004 – March 2005

Table 10: Top 10 sectors – nationality of registered workers. Cumulative total, May 2004 – March 2005.

	Czech Republic	Estonia	Hungary	Latvia	Lithuania	Poland	Slovakia	Slovenia	TOTAL
Administration, Business & Management	2,555	740	895	3,645	7,290	24,215	5,235	35	44,605
Hospitality & Catering	3,170	470	1,770	1,645	4,505	25,340	5,230	70	42,195
Agriculture	720	390	200	2,950	5,385	10,190	925	†	20,765
Manufacturing	815	285	235	1,160	2,125	7,210	1,300	15	13,145
Food/Fish/Meat processing	435	115	60	795	1,340	4,920	935	5	8,610
Health & Medical	705	140	400	175	535	4,730	1,070	10	7,770
Retail	650	110	345	285	745	4,030	945	15	7,125
Construction & Land	410	100	205	420	1,245	3,885	485	†	6,755
Transport	305	50	215	95	320	2,905	270	10	4,175
Entertainment & Leisure	300	40	190	130	375	1,575	415	10	3,030
TOTAL (10)	10,070	2,435	4,515	11,305	23,865	89,005	16,810	175	158,175
Total (other / unknown)	805	100	475	265	670	4,290	805	35	7,445
GRAND TOTAL	10,875	2,535	4,990	11,570	24,535	93,295	17,615	210	165,620

This table shows registered workers rather than the number of applications made. The figures are for initial applications only (not multiple applications, where an individual is doing more than one job simultaneously, nor re-registrations, where an individual has changed employers).

Note: Please see Introduction: Technical Note on WRS data

National Insurance Numbers

13. National Insurance Numbers allocated and purpose of allocation

- Between May 2004 and March 2005, the total number of National Insurance Number applications increased each month until September, when applications tailed off. Numbers continued to rise until December when applications dropped considerably. Since January 2005, applications have continued to rise again.
- Some 98% of National Insurance Numbers were allocated for employment purposes, 0.8% for benefit purposes and 0.6% for tax credit purposes.
- For the period 1st May 2004 to 30th March 2005, 55% of applicants were male and 45% were female. The percentage of 18-34 year olds was 83%.

Table 11: National Insurance Numbers allocated and refused. May 2004 – March 2005.

	Total Allocated	Allocated for employment purposes	Allocated for benefit purposes	Allocated for tax credit purposes	TOTAL REFUSED
May	2,820	2,776	23	21	66
June	5,126	5,030	60	36	154
July	6,096	5,984	61	51	231
August	9,160	9,042	79	39	265
September	7,627	7,506	72	49	190
October	8,551	8,421	88	42	215
November	13,585	13,415	119	51	278
December	10,514	10,365	86	63	212
January	12,848	12,672	97	79	211
February	17,881	17,687	103	91	230
March	15,665	15,474	97	94	147
TOTAL	109,873	108,372	885	616	2,199

Accession Monitoring Report, May 2004 – March 2005

14. National Insurance Number applications by region

Table 12: National Insurance Numbers allocated and refused by region, May 2004 to March 2005

	May*	June*	July*	August*	Sept*	Oct*	Nov*	Dec*	Jan*	Feb*	Mar*	TOTAL
London	1,491	2,242	2,405	2,666	2,655	2,832	3,580	2,945	3,297	4,981	3,367	32,461
South East	590	776	665	1,639	1,128	1,202	2,728	1,917	1,875	1,844	1,614	15,978
East of England	187	491	499	962	879	880	1,962	1,315	1,202	2,512	2,115	13,004
East Midlands	78	276	592	667	633	863	929	753	1,022	1,796	1,475	9,084
North West	100	345	436	508	516	383	1,093	722	1,373	1,253	1,508	8,237
South West	71	297	381	546	433	581	1,079	812	1,232	944	1,195	7,571
Scotland	147	294	413	735	584	720	327	481	747	1,336	1,527	7,311
West Midlands	31	204	432	828	281	441	1,020	790	702	1,249	1,247	7,225
Yorkshire and Humber	40	134	237	395	240	395	613	413	812	1,267	897	5,443
Wales	44	97	105	308	286	218	247	300	467	523	508	3,103
North East	26	49	57	73	89	70	120	85	141	172	161	1,043
Fast-track claims**	81	75	105	98	93	181	165	193	189	234	198	1,612
TOTAL	2,886	5,280	6,327	9,425	7,817	8,766	13,863	10,726	13,059	18,111	15,812	112,072

Note: * Reporting periods are: 1 May-2 June, 3-30 June, 1-28 July, 29 July-1 September, 2-29 September, 30 September-27 October, 28 October-1 December, 2-29 December 2004, 30 December 2004-2 February 2005, 3 February-2 March, and 3 March-30 March

**Fast-track applications relate to highly skilled / specialist employment only. Specific regions are unknown.

Benefits

15. Applications for tax-funded, income-related benefits

- Table 13 below shows applications for income-based Jobseeker's Allowance, Income Support and State Pension Credit.
- Between May 2004 and March 2005, there were 351 applications for Income Support, 829 applications for income-based Jobseeker's Allowance and 11 applications for State Pension Credit.
- Only 24 of these applications were allowed on initial decision to proceed for further consideration of whether the claimants met the other conditions of entitlement. This figure is provisional as, in addition to these applications, eleven were allowed to proceed on re-consideration following appeal.
- In all, so far only 3% of applications have been allowed to proceed and the vast majority (97%) have been disallowed on the basis of the Right to Reside and Habitual Residence Tests.

Accession Monitoring Report, May 2004 – March 2005

• Table 13: Applications for tax-funded, income-related benefits. May 2004 – March 2005

	May	June	July	Aug	Sept	Oct	Nov	Dec	Jan	Feb	Mar	TOTAL
Applications for Income Support												
Disallowed*	17	26	18	26	19	26	21	58	27	48	60	346
Allowed to proceed for further processing	0	0	1	1	0	0	1	1	0	0	1	5
TOTAL	17	26	19	27	19	26	22	59	27	48	61	351
Applications for income-based Jobseeker's Allowance												
Disallowed*	85	106	46	51	68	65	43	78	48	101	119	810
Allowed to proceed for further processing	2	4	2	2	4	1	1	1	0	0	2	19
TOTAL	87	110	48	53	72	66	44	79	48	101	121	829
Applications for State Pension Credit												
Disallowed*	0	0	0	0	1	1	0	2	2	1	4	11
Allowed to proceed for further processing	0	0	0	0	0	0	0	0	0	0	0	0
TOTAL	0	0	0	0	1	1	0	2	2	1	4	11
Total disallowed*	102	132	64	77	88	92	64	138	77	150	183	1,167
Total allowed to proceed for further processing	2	4	3	3	4	1	2	2	0	0	3	24
TOTAL	104	136	67	80	92	93	66	140	77	150	186	1,191

*on the Right to Reside and Habitual Residence tests

16. Nationality of applicants for tax-funded, income-related benefits

- In the period May 2004 – March 2005, most applications were from Polish (36%) and Czech nationals (26%).

Table 14: Applications for tax-funded, income-related benefits by nationality. May 2004 – March 2005

	May	June	July	Aug	Sept	Oct	Nov	Dec	Jan	Feb	Mar	TOTAL
Czech												
Rep	48	64	16	27	29	23	15	26	13	23	26	310
Estonia	3	5	3	2	2	3	1	4	1	6	7	37
Hungary	0	1	0	2	1	6	6	8	6	6	6	42
Latvia	3	7	4	10	5	4	0	13	4	10	11	71
Lithuania	10	13	8	7	13	13	6	17	7	20	23	137
Poland	31	36	31	23	30	32	27	52	29	55	82	428
Slovakia	9	9	3	8	11	12	10	20	17	29	31	159
Slovenia	0	1	2	1	1	0	1	0	0	1	0	7
TOTAL	104	136	67	80	92	93	66	140	77	150	186	1191

17. Applications for tax-funded, income-related benefits by region

Table 15: Applications for tax-funded, income-related benefits by region. May 2004 – March 2005

	May	June	July	Aug	Sept	Oct	Nov	Dec	Jan	Feb	Mar	TOTAL
London	23	34	20	28	34	27	24	48	21	31	52	342
North West	19	26	9	11	15	8	11	26	11	21	20	177
Yorks & Humber	5	16	9	9	9	13	4	8	3	36	30	142
South East	30	13	8	3	8	7	5	11	7	11	10	113
East of England	1	9	5	9	2	5	3	11	11	10	16	82
West Midlands	6	8	0	4	2	8	6	13	0	9	21	77
Scotland	2	6	5	6	4	6	6	3	3	11	10	62
East Midlands	5	0	3	4	5	3	3	10	11	7	10	61
North East	6	13	3	2	8	11	2	4	1	4	5	59
South West	5	6	2	4	3	0	1	1	5	7	9	43
Wales	2	5	3	0	2	5	1	5	4	3	3	33
TOTAL	104	136	67	80	92	93	66	140	77	150	186	1,191

18. Applications for Child Benefit

- During the period May 2004 to March 2005 44% of applications were approved and 16% were rejected.
- There are cases where an application may be processed in a different month to that in which it was received. This is because once a Child Benefit application is made by an A8 national, the Child Benefit Office makes further enquiries about the applicant's date of arrival in the UK and employment status, in order to ascertain whether or not the applicant passes the right to reside test.
- Of the 2,286 Child Benefit applications received where enquiry forms have been returned this quarter, 1,336 were from customers who arrived in the UK before 1 May 2004.
- The total number of children involved (of applications approved) was 2,362.

Table 16: Applications for Child benefit (Great Britain and Northern Ireland¹²). May 2004 – March 2005

	Applications Received	Applications Approved	Applications Rejected	Applications Terminated
May	601	57	15	0
June	560	133	15	0
July	565	275	192	0
August	459	263	123	1
September	604	290	126	0
October	719	375	158	3
November	867	401	184	3
December	714	292	94	0
January	784	432	130	0
February	966	541	114	0
March	1309	511	118	3
TOTAL	8148	3570	1269	10

¹² Child Benefit is administered separately in Great Britain and in Northern Ireland.

19. Applications for Tax Credits

- Between May 2004 and March 2005, 35% of applications for tax credits were approved and 15% were rejected.

Table 17: Applications for Tax Credits. May 2004 – March 2005

	Applications Received	Applications Approved	Applications Rejected	Applications Terminated
May	0	0	0	0
June	80	0	0	0
July	59	6	13	0
August	83	9	32	0
September	92	36	27	0
October	131	24	36	0
November	200	92	41	0
December	295	85	36	0
January	318	143	52	0
February	270	103	33	0
March	596	256	41	0
TOTAL	2124	754	311	0

Housing and Homelessness support

20. Local Authority Lettings

- The May 2004 to March 2005 total of 43 lettings to A8 nationals represents just 0.03% of the average number of lettings to all new tenants over a typical 11 month period.

Table 18: Local Authority lettings, by reason. England.

	Currently legally employed	Self-employed	Retired from employment/s elf-employment in UK	Provider or recipient of services	Other	TOTAL	Percentage that arrived in the UK before 1 May 2004
2004 Q2*	0	0	0	0	2	2	100%
Q3	11	0	0	0	1	12	83%
Q4	18	0	0	0	1	19	53%
2005 Q1	9	1	0	0	0	10	80%
TOTAL	38	1	0	0	4	43	70%

* Please note – 2004 Q2 is May and June. All figures are provisional.

21. Homelessness assistance

- The May 2004 to March 2005 total of 581 decisions on A8 applications for homelessness assistance represents just 0.2% of the average number of homelessness decisions over a typical 11 month period.

Table 19: Decisions on applications for assistance¹³¹⁴. England.

	Main duty owed to Applicant	Applicant not owed a main duty	TOTAL
2004 Q2*	42	122	164
Q3	66	102	168
Q4	70	53	123
2005 Q1	38	88	126
TOTAL	216	365	581

* Please note – 2004 Q2 is May and June. All Figures are provisional.

¹³ Under the homelessness provisions of the 1985 and 1996 Housing Acts.

¹⁴ 'Main duty owed' means that the local authority is required to secure suitable accommodation for applicant and their household.

Accession Monitoring Report, May 2004 – March 2005

- The May 2004 to March 2005 total of 216 A8 acceptances represents just 0.2% of the average number of acceptances of homelessness applications over a typical 11 month period.

Table 20: Homeless households owed a main duty¹⁵ by reason for eligibility. England.

	Currently legally employed	Self-employed	Retired from employment/self-employment in UK	Provider or recipient of services	Other	TOTAL	Percentage that arrived in the UK before 1 May 2004	Percentage of total that were being accommodated at the time main duty accepted
2004 Q2*	19	0	0	3	20	42	90%	67%
Q3	41	0	0	1	24	66	89%	70%
Q4	63	3	0	1	3	70	71%	62%
2005 Q1	30	1	1	0	6	38	68%	55%
TOTAL	153	4	1	5	53	216	80%	62%

* Please note – 2004 Q2 is May and June. All figures are provisional.

¹⁵ 'Main duty owed' means that the local authority is required to secure suitable accommodation for applicant and their household.

Accession Monitoring Report, May 2004 – March 2005

ANNEX A

All occupations in which registered workers are employed, Total July 2004 to March 2005 (May and June unavailable).

Sector	Occupation	TOTAL July to March
GENERAL SERVICES AND TRADES	Beautician	65
	Call centre agent / operator	195
	Carpenter / joiner	685
	Cleaner, domestic staff	6,440
	Electrician	115
	Floorer and wall tiler	35
	Gardener / landscape gardener	470
	Groundsman	145
	Hairdresser or related occupation	105
	Handyman, general (building and contracting)	495
	Launderer, dry cleaner, presser	465
	Mechanic	390
	Packer	8,435
	Painter and decorator	255
	Plasterer	65
	Plumbers, heating and ventilating engineer	75
	Refuse and salvage occupation	145
	Road sweeper	110
	Roofer, roof tiler and slater	30
	Translator	20
Window cleaner	15	
ADMINISTRATION, BUSINESS & MANAGEMENT	Administrator, comms / marketing / advertising	140
	Administrator, finance	240
	Administrator, general	1,380
	Administrator, Human Resources	165
	Administrator, office	620
	Administrator, records	100
	Director/Senior executive	50
	Manager, customer care	70
	Manager, financial	50
	Manager, Human Resources / Training	65
	Manager, office	200
	Manager, quality	50
	Personal assistant	235
	Receptionist (office)	360
	Secretary	110
	Senior manager	15
	Typist	20
AGRICULTURE	Agricultural machinery operator	340
	Animal husbandry	180
	Crop harvester	1,830
	Farm worker/ Farm hand	5,005
	Fisherman	25
	Flower picker	365

Accession Monitoring Report, May 2004 – March 2005

	Forestry workers	50
	Fruit picker (farming)	670
	Manager, farm	15
ARTS, ENTERTAINMENT, LEISURE & SPORT	Actor	5
	Administrator, sports and leisure	40
	Artist / sculptor	15
	Arts officer, Producers or Director	20
	Author, writer	5
	Camera person / Photographer	10
	Circus performer	5
	Circus rigger	5
	Dancer or choreographer	5
	Entertainer	85
	Fitness coach	30
	Leisure and theme park attendants	425
	Leisure and travel service occupations	115
	Lifeguard	30
	Manager, entertainment /arts /leisure	35
	Musicians	35
	Sports and leisure assistants	165
	Sports coach	5
	Sports Manager	†
	Sportsperson (professional)	25
COMPUTER SERVICES	Administrator, IT	105
	Engineer, hardware (computer)	60
	Engineer, software	80
	IT strategy and planning professionals	35
	Manager, IT	15
	Programmer, computer	75
	Software analyst	35
	Systems analyst	30
CONSTRUCTION & LAND SERVICES	Bricklayer / mason	320
	Civil engineer	70
	Construction materials delivery	40
	Constructor, road	40
	Constructor, roofing	45
	Constructor, steel	160
	Labourer, building	3,180
	Site manager (construction)	20
	Site supervisor (construction)	45
	Skilled machine operator (construction)	240
	Skilled vehicle operator (construction)	25
	Supplier, construction materials	20
EDUCATIONAL & CULTURAL	Administrator, university	25
	Caretaker, school	35
	Caterer, higher education	5
	Caterer, school	15
	Childminders and related occupations	395
	Foreign language teacher (private)	5
	Laboratory assistant	60
	Nursery nurse	140
	Playgroup leader / assistant	65
	Researcher, higher education	95

Accession Monitoring Report, May 2004 – March 2005

	School secretary	5
	Teacher, higher education	60
	Teacher, primary and nursery education	30
	Teacher, secondary education	30
	Teacher, special needs education	15
	Teacher's assistant	195
	Tutor (private)	10
EXTRACTION INDUSTRIES	Engineer, oil and natural gas	10
	Site Manager (extraction industry)	5
	Site Supervisor (extraction industry)	†
	Skilled machinery operator (extraction)	170
	Welder	435
	Worker, gas	†
	Worker, oil	5
FINANCIAL SERVICES	Accountant, certified	5
	Accountant, chartered	†
	Accountant, financial	50
	Accountant, trainee	55
	Actuary	†
	Administrator, financial services	85
	Auditor	15
	Bank Manager	†
	Banker, Business	10
	Banker, International	10
	Banker, Investment	5
	Banker, Personal	5
	Cashier (bank, building society)	35
	Financial Adviser	30
	Financial Consultant	40
	Management Accountant	10
FOOD PROCESSING	Baker	460
	Butcher / Meat cutter	530
	Fishmonger / filleter / gutter	210
	Food processing operative (fruit / veg)	2,275
	Food processing operative (meat)	2,065
	Slaughterer, meat	65
GOVERNMENT HEALTH & MEDICAL SERVICES	Administrator, (government & related)	10
	Administrator / receptionist, medical	100
	Administrator, hospital	25
	Alternative/complementary medicine specialist	5
	Anaesthetist	45
	Care assistants and home carers	3,900
	Consultant, hospital	45
	Dental Hygienist	20
	Dental Nurse	95
	Dental practitioner	75
	Dietician	†
	Doctor (hospital)	110
	General Practitioner	20
	Manager, care home	10
	Manager, health and social services	10
	Midwife	†
	Nurse	55

Accession Monitoring Report, May 2004 – March 2005

	Nursing auxiliaries and assistants	150
	Optician	20
	Pharmacist / Pharmacologist	60
	Physiologist	†
	Physiotherapist	15
	Psychiatrist	5
	Psychologist	10
	Researcher (medical)	45
	Residential wardens and Houseparents	50
	Social Worker	85
	Surgeon	15
	Technician, medical	35
	Veterinarian	30
	Ward Sister	5
	Warden (care home)	15
HOSPITALITY & CATERING	Bar staff	2,595
	Chef, head	120
	Chef, other	1,910
	Chef, second	105
	Hotel porter	960
	Kitchen and catering assistants	8,335
	Maid / Room attendant (hotel)	4,640
	Manager, bar	40
	Manager, catering	100
	Manager, hotel	60
	Manager, other hospitality	120
	Manager, restaurant	110
	Manager, safety and hygiene	10
	Receptionist, hotel	510
	Waiter, waitress	6,645
LAW RELATED SERVICES	Barrister	5
	Caseworker (legal)	5
	Interpreter	10
	Lawyer / Solicitor	15
	Legal Clerk	15
	Legal secretary	5
MANUFACTURING	Chemical engineer	30
	Mechanical engineer	150
	Process operative (electronic equipment)	615
	Process operative (other Factory worker)	27,365
	Process operative (Textiles)	410
	Process operative (Vehicle manufacturing)	170
	Production Manager	50
	Supervisor, production	110
	Warehouse manager	15
	Warehouse Supervisor	95
	Welder	230
REAL ESTATE & PROPERTY SERVICES	Architect	55
	Architectural Technician	65
	Property sales and lettings	30
	Surveyor	30
RETAIL & RELATED SERVICES	Cashier / check-out operator	465
	Cold store operative	25

Accession Monitoring Report, May 2004 – March 2005

	Deliveryman	155
	Manager, retail	95
	Market and street traders and assistants	15
	Merchandisers and window dressers	15
	Purchaser (retail trade)	45
	Retailer	125
	Sales and retail assistants	3,620
	Shelf stacker	100
	Supervisor, retail	70
	Telephone salesperson	40
	Telesales Supervisor	5
	Warehouse manager	35
	Warehouse Operative	6,125
	Warehouse Supervisor	30
	Wholesaler	5
SECURITY AND PROTECTION SERVICES	Policeman/woman	†
	Prison Officer	†
	Secure delivery worker	10
	Security Guard	365
	Supervisor, door /bouncer	15
TELECOMMUNICATIONS	Telecommunications administrator	30
	Telecommunications Engineer	60
	Telecommunications Manager	†
	Telecommunications Supervisor	†
TRANSPORT	Air Steward / Stewardess	90
	Airport staff	30
	Conductor, railways	†
	Conductor, bus	5
	Dock Worker	15
	Driver, bus	515
	Driver, coach	40
	Driver, crane	15
	Driver, delivery van	915
	Driver, fork-lift	120
	Driver, HGV (Heavy Goods Vehicle)	1,265
	Driver, PCV (Passenger Carrying Vehicle)	90
	Driver, taxi	20
	Engineer, other transport related	105
	Engineer, railway	10
	Ship hand	5
	Ship's Captain	†
	Steward / Stewardess (ferry/shipping)	10
	Ticketeer and station attendants	25
	UTILITIES (Gas, Water & Electricity suppliers)	Administrator (utilities)
Engineer, electrical		35
Engineer, gas		†
Engineer, water		5
Maintenance (electrical)		45
Maintenance (gas)		5
Maintenance (water/sewage)		5
Manager, utilities		10
Power station staff		5
Sewage Worker	10	

Accession Monitoring Report, May 2004 – March 2005

	Supervisor (gas/water/electric)	5
	Water works staff	5
	Not Stated	6,555
TOTAL		126,835