



Home Office

Border & Immigration Agency

ACCESSION MONITORING REPORT MAY 2004 – DECEMBER 2007

A8 COUNTRIES

DWP Department for
Work and Pensions



A joint online report between the Border and Immigration Agency, Department for Work and Pensions, HM Revenue and Customs and Communities and Local Government

© Crown Copyright 2008

This publication is not available in printed format

CONTENTS

INTRODUCTION	1
Background.....	1
Key findings	1
Note on the publication.....	2
Note on Worker Registration Scheme data.....	2
Technical notes.....	2
Links to useful websites	3
WORKER REGISTRATION SCHEME (WRS).....	4
Applicants and applications to the WRS.....	4
1. Applicants	4
1a. Applications	6
Profile of registered workers	8
2. Nationality of applicants.....	8
3. Age and Gender of registered workers.....	10
4. Dependants of registered workers.....	11
5. Sectors in which registered workers are employed.....	12
6. Occupations in which registered workers are employed	14
7. Registered workers' hours of work and wages.....	16
8. Proportion of registered workers in temporary/permanent employment	16
9. Intended Length of Stay.....	16
10. Geographical distribution of employers of registered workers	17
11. Geographical distribution of employers of registered workers by sector	19
12. Nationality of registered workers by sector	21
A8 NATIONAL INSURANCE NUMBERS.....	23
13. National Insurance Numbers allocated and purpose of allocation, Great Britain	23
14. National Insurance Number applications by region, Great Britain	24
A8 BENEFITS AND TAX CREDITS	25
15. Applications for tax-funded, income-related benefits, Great Britain.....	25
16. Nationality of applicants for tax-funded, income-related benefits, Great Britain	26
17. Applications for tax-funded, income-related benefits by region, Great Britain	26
18. Applications for Child Benefit, UK	27
19. Applications for Tax Credits, UK	28
A8 HOUSING AND HOMELESSNESS SUPPORT	29
20. Homelessness assistance, England	29
21. Social housing lettings, England	30
ANNEX A.....	31
All occupations in which registered workers are employed.....	31

INTRODUCTION

BACKGROUND

On 1 May 2004, ten countries – Cyprus, Czech Republic, Estonia, Hungary, Latvia, Lithuania, Malta, Poland, Slovakia and Slovenia – joined the European Union (EU). From that date, nationals of Malta and Cyprus have had full free movement rights and rights to work throughout the EU. The 15 existing EU member states, prior to enlargement of the EU, had the right to regulate access to their labour markets by nationals of the other eight countries – the ‘Accession 8’ or ‘A8’. The UK Government put in place transitional measures to regulate A8 nationals’ access to the labour market (via the Worker Registration Scheme) and to restrict access to benefits.

The data in this publication are based on Management Information, are provisional and may be subject to change. The data are **not** National Statistics.

KEY FINDINGS

- Nationals from the A8 countries continue to come to the UK to work, contributing to the success of the UK economy, while making few demands on our welfare system.
- In total there were 50,000 initial applicants to the Worker Registration Scheme (WRS) in Quarter 4 (Q4) 2007, compared to 65,000 in Q4 2006. The annual total fell from 234,725 in 2006 to 214,510 in 2007.
- A8 workers are continuing to go where the work is, helping to fill the gaps in our labour market, particularly in administration, business and management, hospitality and catering, agriculture, manufacturing and food, fish and meat processing. In 2007, 44% of registered workers applied to work in administration, business and management (which includes employment agencies), unchanged when compared to 2006.
- In many cases, A8 nationals are supporting the provision of public services in communities across the UK. In the twelve months up to 31 December 2007, 2,015 A8 nationals registered as bus, lorry and coach drivers, 4,325 as care workers, 815 as teachers, researchers and classroom assistants, 110 as dental practitioners (including hygienists and dental nurses), and 1,035 as GPs, hospital doctors, nurses and medical specialists.
- Workers applied to work for employers based all over the UK, with the proportion applying to London falling from 20% in 2004 to 10% in 2007. As the proportion applying elsewhere has increased, Anglia and the Midlands have now overtaken London, each with 14% of the total registered workers in 2007.
- 97% of workers registered with the WRS in 2007 were working more than 16 hours a week, and 87% more than 35 hours a week.
- Almost 98% of applications for National Insurance numbers made by A8 nationals between May 2004 and December 2007 were for employment purposes.
- The vast majority of workers registering since May 2004 were young: 82% aged between 18 and 34. 93% of workers stated that they had no dependants living with them in the UK when they registered and only 6% had dependants under the age of 17 with them.
- Although increasing, the numbers of A8 nationals applying for tax-funded income-related benefits and housing support remain low. For example, 11,992 applications for Income Support and Jobseeker's Allowance were processed in 2007, of which 3,004 were allowed to proceed for further consideration, compared to 6,171 and 1,562 in 2006 and 2,460 and 169 in 2005.

NOTE ON THE PUBLICATION

This is the fourteenth of a series of quarterly reports based on provisional Management Information collected through the WRS and manual monitoring of applications for National Insurance numbers, claims for benefits, applications for tax credits and applications for housing and homelessness assistance. The figures published in the earlier reports have been updated to include applications that were previously outstanding. The data are presented in quarters and annually, except for 2004, which has been shown as a total for the part year May to December 2004.

NOTE ON WORKER REGISTRATION SCHEME DATA

Nationals of the A8 countries who wish to take up employment in the UK for a period of at least a month are generally required to register with the WRS. The statistics in this publication are only of those who have registered with the Home Office to work as employees in the UK. Workers who are self-employed do not need to register and are therefore not included in these figures; there may also be other workers from the accession countries who for one reason or another do not register and are thus also not included in these figures. The data from the WRS provided here are data on applicants to the scheme rather than applications (with the exception of Table 2 and Section 1a). Applicants must register more than once if they are employed by more than one employer. They must also re-register if they change employer. Each application to the WRS therefore represents one job, not one applicant. To avoid counting applicants more than once, each applicant is represented only once in this report, with information relating to the **first** job for which he/she registered.

Data are provisional and an estimated 940 applications remain outstanding, of which 880 were received in Q4 2007. In these cases, final decisions had not been issued at the time of producing this report. In this report, outstanding applications are included only in Table 1, in the 'Outstanding' column.

All WRS data in this report are sorted according to the date the applicant applied. The 'date applied' is the date the applicant puts on the application form. There will be cases in which there is a delay between when the forms are filled in or posted and when the applications are received by the Home Office.

The number of applicants to the WRS does **not** represent a measurement of net migration to the UK (inflows minus outflows). Rather, it is a gross (cumulative) figure for the number of workers applying to the WRS. The figures are not current: an individual who has registered to work and who leaves employment is not required to de-register, so some of those counted will have left the employment for which they registered and indeed some are likely to have left the UK. Figures for net migration to the UK are published by the Office for National Statistics (ONS). The first release of the International Migration estimates for 2006, published on 15 November 2007, estimates that 71,000 more A8 citizens migrated into the UK for at least a year than left in 2006. This shows an increase of 16% compared with an estimated 61,000 in 2005. For further information, please click on the following link to the ONS website.

<http://www.statistics.gov.uk/pdfdir/emig1107.pdf>

Enquiries about the figures in this Monitoring Report should be made to the Border and Immigration Agency (Tel: 020 8760 8757). Press enquiries should be made to the Home Office Press Office (Tel: 020 7035 3535).

TECHNICAL NOTES

- All WRS figures (other than percentages) shown in Tables 1 to 11 and the annex are rounded to the nearest five. The figures in Tables 12 to 20 are not rounded.
- † indicates 1 or 2.
- - indicates nil.
- Because of rounding, figures may not sum to the totals shown. All percentages and charts are calculated from non-rounded figures.
- Since accession took place on 1 May 2004, the data quoted for 2004 are only for the part year from May to December, so care should be taken when comparing this with subsequent periods.

LINKS TO USEFUL WEBSITES

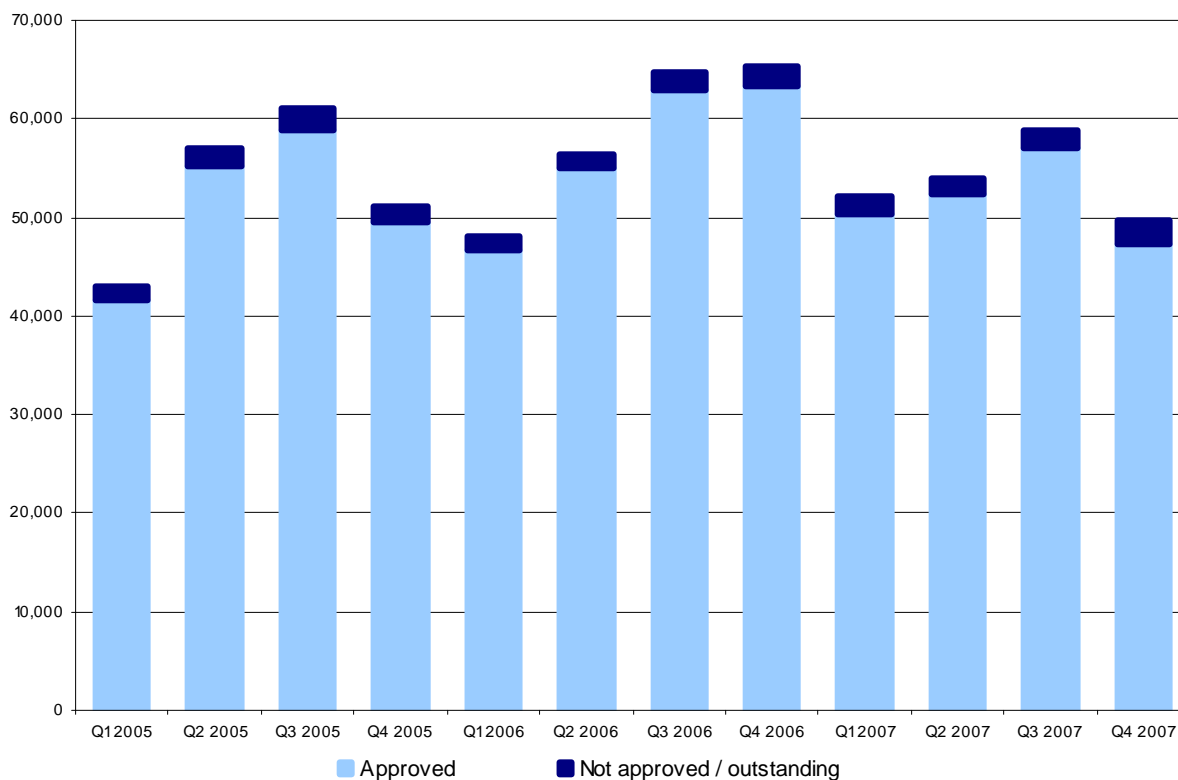
- Working in the UK schemes and programmes:
www.bia.homeoffice.gov.uk/workingintheuk/
- Link to the Worker Registration Form and guidance:
www.bia.homeoffice.gov.uk/workingintheuk/wrs
- Fresh Talent: Working in Scotland Scheme:
http://www.scotlandistheplace.com/stitp/sitp_display_noflash.jsp?pContentID=276&p_applic=CCC&pElementID=165&pMenuID=3&p_service=Content.show&
- HM Revenue & Customs (HMRC) Right To Reside In The United Kingdom:
<http://www.hmrc.gov.uk/manuals/tctmanual/TCTM02001.htm>
<http://www.hmrc.gov.uk/taxcredits/residence-rules.htm>
- Communities and Local Government (CLG):
<http://www.communities.gov.uk/>
- Department for Work and Pensions (DWP) – The impact of free movement of workers from Central and Eastern Europe on the UK labour market:
<http://www.dwp.gov.uk/asd/asd5/wp29.pdf>
- DWP – National Insurance Number Allocations to Overseas Nationals Entering the UK 2006:
http://www.dwp.gov.uk/asd/asd1/niall/nino_allocation.asp
- Accession Monitoring Report:
http://www.bia.homeoffice.gov.uk/sitecontent/documents/aboutus/Reports/accession_monitoring_report/
- The European Community Association Agreements Statistics for Bulgaria, Romania and Turkey:
<http://www.bia.homeoffice.gov.uk/sitecontent/documents/aboutus/Reports/eaastatistics/>
- Bulgarian and Romanian Accession Statistics:
<http://www.bia.homeoffice.gov.uk/sitecontent/documents/aboutus/Reports/bulgarianromanian/>
- Home Office – Research, Development and Statistics report on Employers' use of migrant labour:
<http://www.homeoffice.gov.uk/rds/pdfs06/rdsolr0406.pdf>
- The Office for National Statistics (ONS):
<http://www.statistics.gov.uk/>
- Article in ONS Population Trends — Migrants from central and eastern Europe: Local Geographies (Viktorija Bauere, Paul Densham, Jane Millar and John Salt)
http://www.statistics.gov.uk/downloads/theme_population/PT129.pdf
- ONS statistics on International Migration (MN Series):
<http://www.statistics.gov.uk/statbase/Product.asp?vlnk=507&More=N>
- ONS International Passenger Survey Travel Trends (annual data on travel to/from the UK):
<http://www.statistics.gov.uk/StatBase/Product.asp?vlnk=1391&Pos=&ColRank=1&Rank=272;>
- ONS Visits to the UK from the enlarged EU (monthly data on EU travel to the UK from May 2004 to December 2006):
<http://www.statistics.gov.uk/statbase/Product.asp?vlnk=12222>

WORKER REGISTRATION SCHEME (WRS)¹

APPLICANTS AND APPLICATIONS TO THE WRS

1. Applicants²

Chart 1 – Applicants by quarter of application, January 2005 - December 2007



- A cumulative total of 796,000 applicants have applied to register on the WRS between 1 May 2004 and 31 December 2007, of which 766,000 initial applications were approved. This does not indicate the number of long-term migrants into the UK as most intend to come for limited periods.
- In total there were 50,000 applicants in Q4 2007, of whom 47,000 (95%) were issued with Worker Registration certificates and cards, compared to 65,000 and 63,000 (97%) in Q4 2006.
- Initial applications were at their highest monthly levels in October and November 2006. In 2007, the number of initial applications peaked in July and October.
- The monthly totals of initial applications for October to December 2007 were 21,000, 19,000, and 10,000 respectively.
- The annual total fell from 234,725 in 2006 to 214,510 in 2007.

¹ Management Information from Border and Immigration Agency, which is extracted from administrative databases.

² The data for applicants are recorded by the date on the application form, the standard statistical approach. However, as applications continue to be received dated under previously published quarters, the number of applications will show increases for these quarters in subsequent reports.

Table 1 – Applicants, by quarter and year of application, May 2004 – December 2007

Number of applicants

Period		Approved	Refused	Exempt	Withdrawn	Outstanding	Total
2004	Total	125,880	1,250	640	6,780	-	134,550
2005	Total	204,970	1,800	310	5,250	†	212,325
2006	Q1	46,765	320	30	995	-	48,110
	Q2	54,905	285	40	1,255	-	56,480
	Q3	62,855	320	25	1,585	†	64,790
	Q4	63,350	275	110	1,605	-	65,340
2006	Total	227,875	1,205	205	5,440	†	234,725
2007	Q1	50,305	220	150	1,375	15	52,065
	Q2	52,295	185	120	1,295	15	53,905
	Q3	57,040	235	120	1,455	30	58,880
	Q4	47,330	305	130	1,015	875	49,655
2007	Total	206,965	945	520	5,145	940	214,510

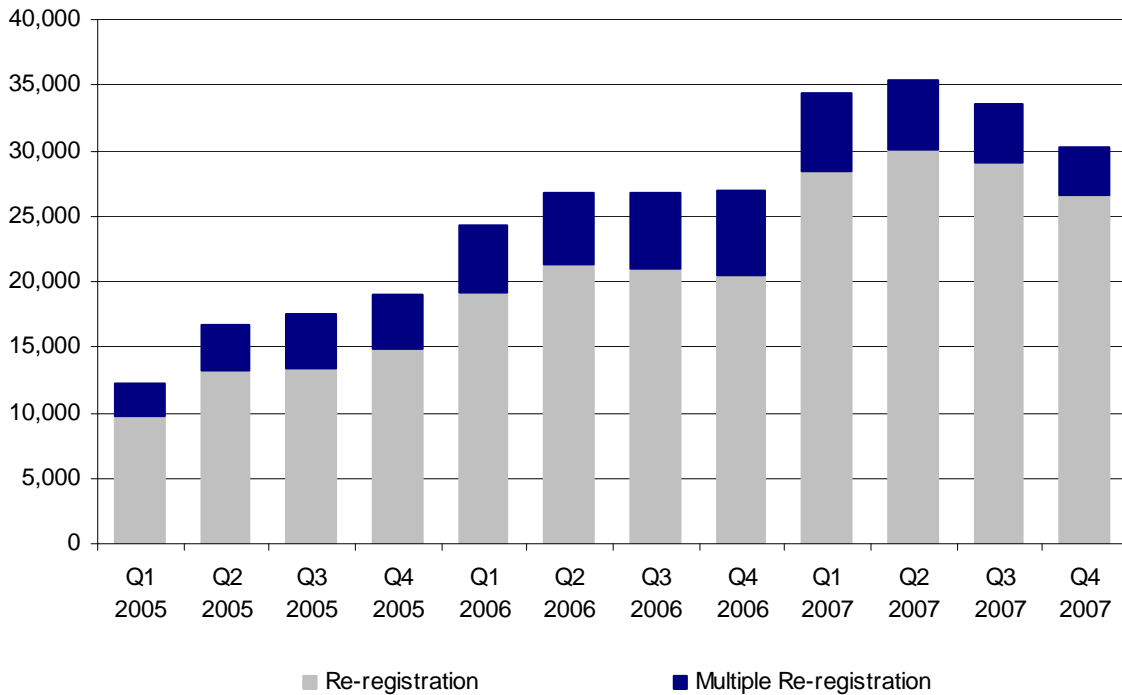
This table shows applicants rather than the number of applications made. The figures are for initial applications only (and do not include the 5,935 multiple applications, where an individual is doing more than one job simultaneously, or the 318,035 applications to re-register, where an individual has changed employers).

The total shown for 2004 is for the part year May to December.

Note: Please see Introduction: Technical Note on WRS data.

1a. Applications

Chart 2 – Total re-registrations, by quarter of application, January 2005 - December 2007



- A total of 79,000 initial applications and re-registrations, excluding outstanding applications, were made in Q4 2007, of which 78,000 (98%) were approved (i.e. the worker's employment was registered), compared to 92,000 and 90,000 (98%) in Q4 2006. The annual total rose from 341,000 in 2006 to 348,000 in 2007.
- Total applications since May 2004, include 257,000 applications to re-register (from those who had previously registered but have then changed employer), 6,000 multiple applications (from those working for more than one employer simultaneously), and 61,000 applications for multiple re-registration (from those registering for subsequent, additional jobs, or those who have left their employer and are re-registering for more than one job). These applications account for the difference between the number of applicants and the number of applications.
- The number of re-registrations was 27,000 in Q4 2007 compared to 21,000 in Q4 2006. The annual number of re-registrations rose by 39% to 114,000 in 2007, but multiple re-registrations fell by 15% over the same period to 20,000.

Table 2 – Total re-registrations, by quarter and year of application, May 2004 - December 2007

Period		Number of applications		
		Re-registration	Multiple Re-registration	Total
2004	Total	10,130	3,855	13,990
2005	Total	51,360	13,945	65,305
2006	Q1	19,095	5,240	24,335
	Q2	21,270	5,565	26,835
	Q3	20,925	5,840	26,765
	Q4	20,550	6,460	27,010
2006	Total	81,840	23,105	104,945
2007	Q1	28,350	6,090	34,435
	Q2	30,005	5,425	35,430
	Q3	29,160	4,450	33,610
	Q4	26,625	3,700	30,325
2007	Total	114,135	19,660	133,800

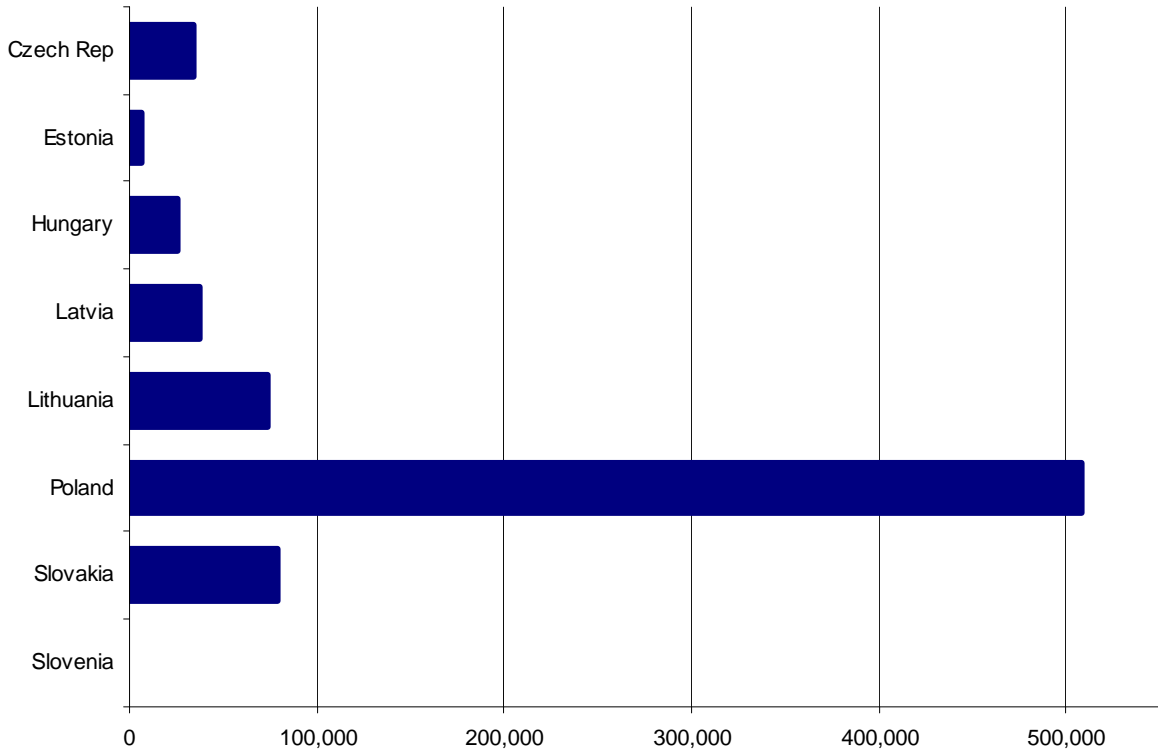
The total shown for 2004 is for the part year May to December.

Note: Please see Introduction: Technical Note on WRS data.

PROFILE OF REGISTERED WORKERS

2. Nationality of applicants

Chart 3 – Nationality of approved applicants, May 2004 - December 2007



- In the period 1 May 2004 to 31 December 2007, the highest proportion of approved applicants were Polish (66% of the total), followed by Lithuanian (10%) and Slovakian (10%)
- The percentage of approved applications that were made by Polish nationals in Q4 2007 was 71%, unchanged from Q3 2007 but lower than Q4 2006 (74%).
- Only 695 Slovenian applications have been approved since May 2004, and this is too few to register in the above chart.

Table 3 – Nationality of approved applicants, by quarter and year of application, May 2004 – December 2007

		Number of applicants								
Period		Czech Rep	Estonia	Hungary	Latvia	Lithuania	Poland	Slovakia	Slovenia	Total
2004	Total	8,255	1,860	3,620	8,670	19,270	71,025	13,020	160	125,880
2005	Total	10,575	2,560	6,355	12,960	22,990	127,325	22,035	170	204,970
2006	Q1	1,865	390	1,435	2,560	4,235	31,920	4,305	55	46,765
	Q2	2,045	340	1,600	2,790	4,470	38,125	5,490	40	54,905
	Q3	2,220	420	1,835	2,265	4,340	45,465	6,260	50	62,855
	Q4	2,215	325	2,190	1,880	4,015	46,985	5,695	40	63,350
2006	Total	8,345	1,475	7,060	9,490	17,065	162,495	21,755	185	227,875
2007	Q1	1,820	275	1,965	1,835	3,740	35,785	4,840	45	50,305
	Q2	1,800	210	2,085	1,630	3,685	37,250	5,595	40	52,295
	Q3	1,980	270	2,295	1,535	3,700	41,010	6,200	50	57,040
	Q4	1,780	195	2,375	1,180	2,870	33,495	5,385	50	47,330
2007	Total	7,380	950	8,720	6,180	13,990	147,540	22,020	180	206,965
% of Q4 2007 Total		4%	0%	5%	2%	6%	71%	11%	0%	100%

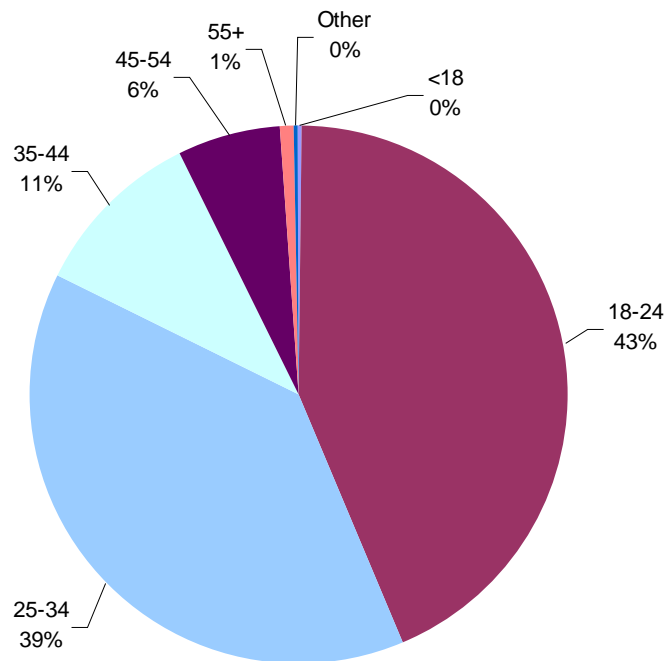
This table shows applicants approved rather than the total number of applications made. The figures are for initial applications only (not multiple applications, where an individual is doing more than one job simultaneously, or re-registrations, where an individual has changed employers).

The total shown for 2004 is for the part year May to December.

Note: Please see Introduction: Technical Note on WRS data.

3. Age and Gender of registered workers

Chart 4 – Age of registered workers, by percentage, May 2004 – December 2007



- Of those who applied between May 2004 and December 2007, 82% of registered workers were aged 18-34. In Q4 2007 this percentage was 79% and the percentage in the 35-44 age group was 11%, compared to 82% and 10% in both Q3 2007 and Q4 2006.
- The male to female ratio for those who applied between May 2004 and December 2007 is 57:43. In the latest quarter the ratio was 54:46.

Table 4 – Age of registered workers, by quarter and year of application, May 2004 - December 2007

		Number of registered workers								
Period		<18	18-24	25-34	35-44	45-54	55-64	65+	Others ³	Total
2004	Total	320	54,355	49,835	12,655	7,425	1,020	20	255	125,880
2005	Total	655	89,815	78,295	21,760	12,575	1,565	20	285	204,970
2006	Q1	105	18,365	19,510	5,205	3,080	425	10	70	46,765
	Q2	175	23,330	21,780	5,665	3,420	445	5	75	54,905
	Q3	295	31,270	21,545	5,805	3,410	440	5	90	62,855
	Q4	160	26,765	25,280	6,520	3,965	575	5	75	63,350
2006	Total	740	99,735	88,120	23,190	13,875	1,885	25	305	227,875
2007	Q1	130	19,345	20,925	5,805	3,485	545	15	50	50,305
	Q2	250	21,185	20,410	6,000	3,790	570	15	75	52,295
	Q3	395	27,630	19,060	5,760	3,510	585	10	85	57,040
	Q4	165	19,135	18,340	5,370	3,590	665	10	60	47,330
2007	Total	940	87,295	78,740	22,935	14,380	2,370	50	265	206,965

This table shows registered workers rather than the number of applications made. The figures are for initial applications only (not multiple applications, where an individual is doing more than one job simultaneously, or re-registrations, where an individual has changed employers). The total shown for 2004 is for the part year May to December.

Note: Please see Introduction: Technical Note on WRS data.

³ This includes applicants who did not state their age and, for data quality reasons, applicants who submitted an application form with a date of birth that would make them less than 15 years old or above 72 years old.

4. Dependants of registered workers⁴

- A small minority (7%) of registered workers who applied between May 2004 and December 2007 declared that they had dependants living with them in the UK when they applied. Amongst those who did have dependants, the average number of dependants was 1.5.
- The number of dependants as a proportion of the number of registered workers was 17% in Q4 2007, compared to 13% in Q3 2007 and 16% in Q4 2006.

Table 5 – Registered workers' dependants⁵, by quarter and year of application, May 2004 - December 2007

Period		Total registered workers	Registered workers with dependants	Number of dependants		
				Under 17	17 and over	Total
2004	Total	125,880	5,485	4,455	4,070	8,525
2005	Total	204,970	10,695	8,510	7,775	16,285
2006	Q1	46,765	3,690	3,060	2,525	5,590
	Q2	54,905	4,215	3,495	2,815	6,310
	Q3	62,855	5,190	4,365	3,450	7,815
	Q4	63,350	6,700	5,570	4,620	10,185
2006	Total	227,875	19,790	16,495	13,410	29,905
2007	Q1	50,305	5,100	4,425	3,375	7,800
	Q2	52,295	4,510	4,035	2,905	6,940
	Q3	57,040	4,875	4,470	3,195	7,665
	Q4	47,330	5,125	4,910	3,240	8,150
2007	Total	206,965	19,605	17,840	12,715	30,550

This table shows registered workers rather than the number of applications made. The figures are for initial applications only (not multiple applications, where an individual is doing more than one job simultaneously, or re-registrations, where an individual has changed employers).

The total shown for 2004 is for the part year May to December.

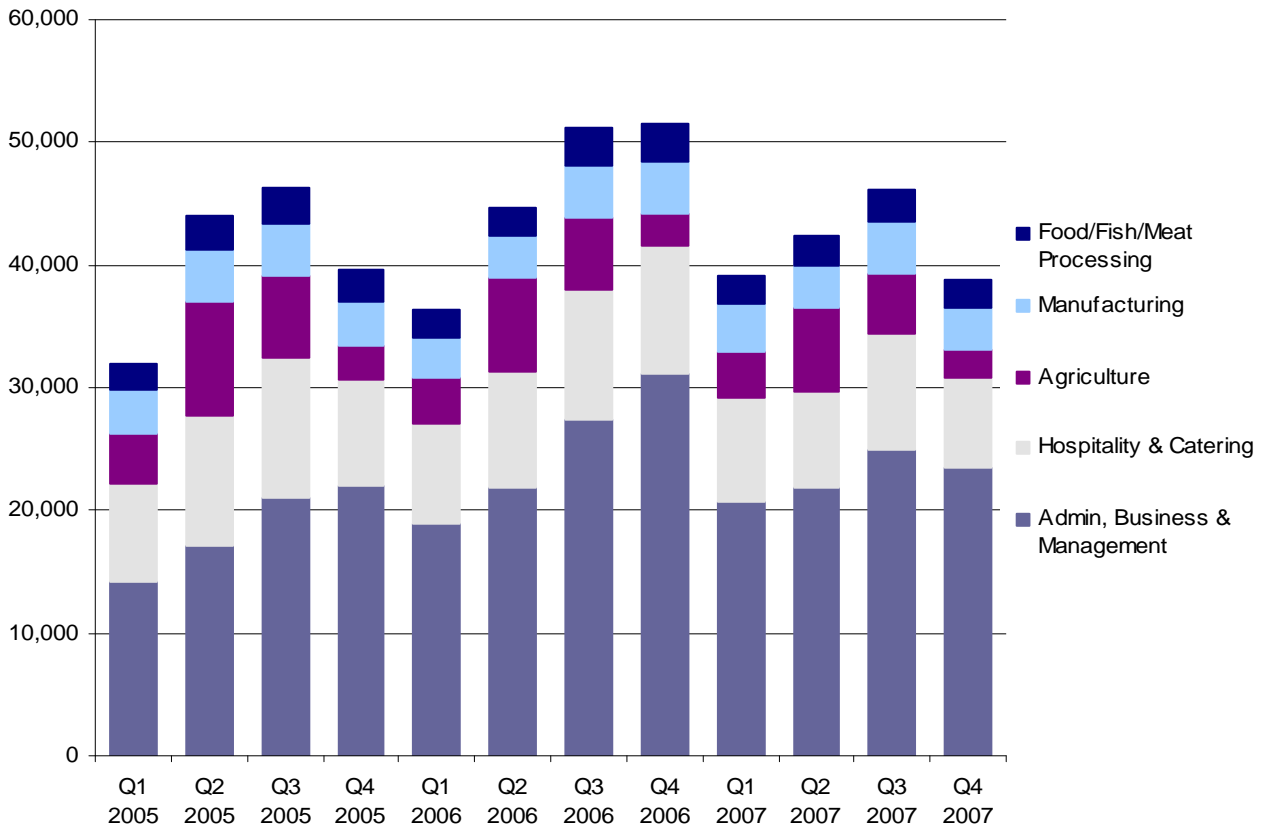
Note: Please see Introduction: Technical Note on WRS data.

⁴ These data are derived from applicants' responses to the question on the WRS application form: *If your dependants (children and/or spouse or partner) are living with you in the UK, how many of them are: Aged 16 or under? and Aged 17 or above?* The Home Office does not verify these responses.

⁵ It is likely that there is some 'double counting' of dependants, in the sense that some of those recorded as dependants (particularly older children and spouses) may also have registered in their own right to work in the UK.

5. Sectors⁶ in which registered workers are employed

Chart 5 – Top 5 sectors in which registered workers are employed, by quarter of application, January 2005 – December 2007



- The top five sectors for registered workers, who applied between May 2004 and December 2007, were administration, business and management⁷ (39%), hospitality and catering (19%), agriculture (10%), manufacturing (7%) and food, fish, meat processing (5%).
- The proportion of workers working for employers in the administration, business and management group⁶ rose to 50% in Q4 2007, from 44% in Q3 2007 and 49% in Q4 2006. Meanwhile, the proportion in hospitality and catering remained at 16% in Q4 2007, unchanged from Q3 2007 and slightly lower than the 17% in Q4 2006.
- Agriculture fell to 5% in Q4 2007, reflecting the seasonal nature of the work, from 9% in Q3 2007 but was slightly higher than the 4% in Q4 2006.

⁶ Not equivalent to the ONS Standard Industry Classification codes.

⁷ The majority of workers in the administration, business & management sector work for recruitment agencies and could be employed in a variety of industries.

Table 6 – Sectors⁸ in which registered workers are employed, by quarter and year of application, May 2004 - December 2007

Sector	Number of registered workers											
	2004 Total	2005 Total	2006				2006 Total	2007				2007 Total
			Q1	Q2	Q3	Q4		Q1	Q2	Q3	Q4	
Administration, business & management	31,235	74,485	18,970	21,850	27,340	31,075	99,235	20,775	21,895	25,010	23,535	91,220
Hospitality & catering	34,310	38,550	8,105	9,440	10,630	10,500	38,675	8,400	7,815	9,355	7,345	32,915
Agriculture	16,905	22,700	3,755	7,655	5,830	2,655	19,900	3,790	6,795	4,940	2,225	17,745
Manufacturing	9,750	15,610	3,235	3,440	4,275	4,215	15,160	3,850	3,470	4,255	3,470	15,045
Food/fish/meat processing	6,480	10,605	2,245	2,290	3,070	3,035	10,640	2,275	2,350	2,535	2,185	9,345
Health & medical	5,550	10,935	2,795	2,235	2,515	2,390	9,935	1,990	1,610	1,840	1,475	6,915
Retail	5,355	8,760	1,975	2,115	2,670	3,160	9,920	2,340	2,045	2,500	2,195	9,085
Construction & land	5,185	7,255	2,155	2,260	2,365	2,235	9,015	2,810	2,505	2,415	1,780	9,510
Transport	2,725	6,695	1,420	1,395	1,405	1,525	5,745	1,505	1,300	1,285	1,105	5,195
Entertainment & leisure	2,190	3,675	615	910	1,040	590	3,155	620	865	880	355	2,720
Education & cultural	1,490	1,920	595	400	495	560	2,050	540	435	580	550	2,110
Real Estate & property	535	925	210	205	280	470	1,165	550	515	590	430	2,085
Financial services	425	455	140	150	225	175	695	165	130	220	165	680
Computer services	385	420	150	105	140	160	555	165	115	160	135	570
Extraction industries	365	440	105	140	155	200	605	165	130	180	105	580
Security & protection	345	550	120	130	150	155	555	135	105	100	80	425
Telecommunications	180	185	40	35	65	55	195	65	50	45	50	210
Sporting activities	145	120	30	30	30	40	125	35	25	25	20	105
Utilities (gas, electricity, water)	125	155	40	50	60	45	200	45	70	40	50	205
Government	80	125	25	30	35	60	145	50	30	40	30	150
Law-related services	85	75	10	15	25	30	75	25	25	30	25	105
Not stated	2,030	330	30	25	50	15	120	10	15	5	15	40
Total	125,880	204,970	46,765	54,905	62,855	63,350	227,875	50,305	52,295	57,040	47,330	206,965

This table shows registered workers rather than the number of applications made. The figures are for initial applications only (not multiple applications, where an individual is doing more than one job simultaneously, or re-registrations, where an individual has changed employers).

The total shown for 2004 is for the part year May to December.

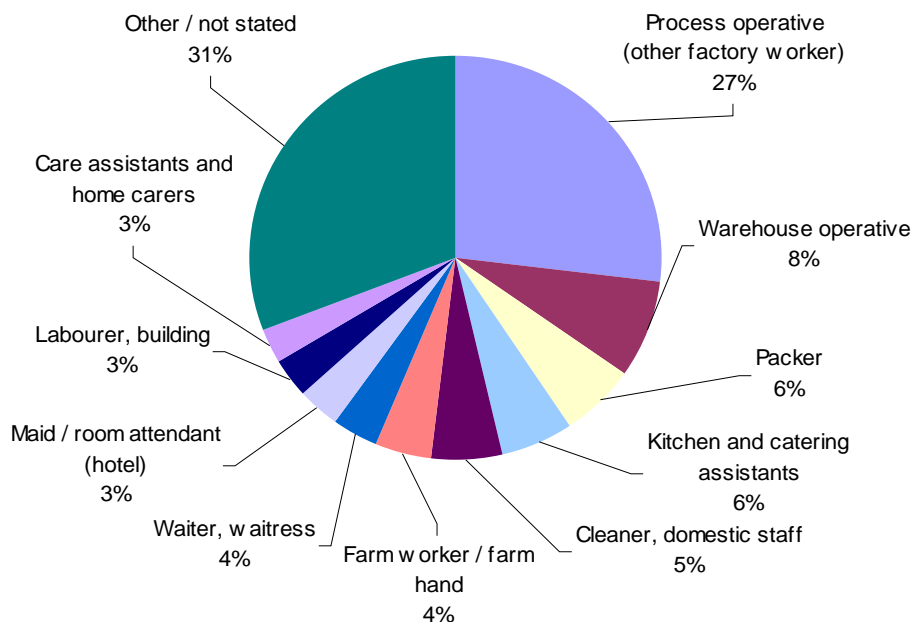
The majority of workers in the administration, business & management sector work for recruitment agencies and could be employed in a variety of industries.

Note: Please see Introduction: Technical Note on WRS data.

⁸ Not equivalent to the ONS Standard Industry Classification codes.

6. Occupations⁹ in which registered workers are employed

Chart 6 – Top 10 occupations in which registered workers are employed, July 2004 - December 2007
(May/June 2004 data not available)



Note: Percentages indicate percentage of all workers registered, July 2004 to December 2007

- The top 20 occupations have remained largely consistent over the period, July 2004 to December 2007.
- The biggest group of workers registered with the WRS is in general occupations (27%) classified as “process operatives (other factory worker)”. This is followed by warehouse operatives (8%) and packers (6%).
- Please refer to Annex A for a full table of occupations of registered workers who applied between July 2004 and December 2007.

⁹ Not equivalent to the ONS Standard Occupational Classification codes.

Table 7 – Top 20 occupations in which registered workers are employed, by quarter and year of application, July 2004 – December 2007

Number of registered workers

Occupation	2004 Total	2005 Total	2006				2006 Total	2007				2007 Total
			Q1	Q2	Q3	Q4		Q1	Q2	Q3	Q4	
Process operative (other factory worker)	17,970	53,265	12,485	14,005	17,360	20,070	63,920	14,515	15,190	17,330	15,660	62,695
Warehouse operative	3,810	13,860	3,665	4,390	6,225	7,620	21,895	4,225	3,905	5,450	5,930	19,505
Packer	5,515	13,375	2,625	2,955	3,680	4,080	13,335	2,570	2,880	3,065	3,095	11,610
Kitchen and catering assistants	5,940	12,415	2,695	3,230	3,440	3,590	12,955	2,695	2,705	3,185	2,400	10,985
Cleaner, domestic staff	4,355	10,200	3,150	2,925	3,365	3,640	13,080	3,220	2,830	3,120	2,490	11,655
Farm worker/ farm hand	3,350	9,330	1,915	3,860	2,785	1,110	9,670	1,835	3,230	2,430	965	8,465
Waiter, waitress	4,980	7,660	1,530	1,765	2,010	2,115	7,420	1,560	1,370	1,755	1,340	6,025
Maid / room attendant (hotel)	3,375	7,060	1,665	1,855	2,060	2,115	7,700	1,765	1,725	1,955	1,630	7,075
Labourer, building	2,080	5,275	1,510	1,795	1,790	1,805	6,895	1,820	1,830	1,675	1,105	6,425
Sales and retail assistants	2,535	5,405	1,245	1,415	1,720	1,935	6,320	1,515	1,420	1,695	1,430	6,060
Care assistants and home carers	2,580	6,880	1,765	1,480	1,570	1,475	6,285	1,230	940	1,180	925	4,270
Crop harvester	1,235	4,750	450	1,820	1,210	190	3,675	385	1,455	870	255	2,965
Bar staff	1,950	2,970	550	585	720	645	2,500	580	555	620	425	2,180
Food processing operative (fruit / veg)	1,600	3,370	640	755	815	705	2,920	415	430	435	350	1,630
Food processing operative (meat)	1,525	2,555	490	535	790	755	2,570	525	550	530	485	2,085
Chef, other	1,380	2,400	495	605	605	645	2,350	560	465	505	435	1,960
Fruit picker (farming)	545	2,305	140	710	600	95	1,540	215	890	650	85	1,840
Administrator, general	1,000	1,780	395	480	585	450	1,910	365	365	385	345	1,465
Driver, HGV (Heavy Goods Vehicle)	730	2,215	350	355	420	460	1,595	410	400	390	315	1,520
Carpenter / joiner	440	1,090	460	410	605	460	1,935	620	520	595	430	2,165
Total in the top 20 occupations	66,890	168,155	38,220	45,935	52,350	53,960	190,465	41,025	43,660	47,805	40,095	172,585
Other/Not stated	15,125	34,170	8,715	8,965	10,655	9,610	37,950	9,830	9,105	9,785	7,615	36,335

This table shows registered workers rather than the number of applications made. The figures are for initial applications only (not multiple applications, where an individual is doing more than one job simultaneously, or re-registrations, where an individual has changed employers).

The total shown for 2004 is for the part year July to December.

Note: Please see Introduction: Technical Note on WRS data.

7. Registered workers' hours of work¹⁰ and wages¹¹

- 97%¹² of workers who applied in the twelve months to December 2007 were working more than 16 hours a week, and 87% more than 35 hours a week. This shows little change with figures of 97% and 86% respectively for the period May 2004 to December 2007.
- 71% of workers who applied between January 2007 and December 2007 stated that their hourly rate of earnings was £4.50 - £5.99 per hour, while 22% stated an hourly rate of £6.00 - £7.99. This compares to 76% and 18% for the period May 2004 to December 2007.

8. Proportion of registered workers in temporary/permanent employment¹³

- Among the workers who registered in the twelve months to December 2007 52% were in temporary employment and 44% in permanent employment (4% did not provide this information). This was little changed compared with data for the period May 2004 and December 2007 when 51% were in temporary employment and 46% in permanent employment.
- The proportion of registered workers employed on a temporary or permanent basis varied considerably between sectors. Between January 2007 and December 2007, those indicating temporary work represented 74% of registered workers who applied to work in agriculture and 79% in administration, business & management. In hospitality and catering and in manufacturing the pattern was reversed, with 77% and 65% indicating permanent employment.

9. Intended Length of Stay

- 59% of registered workers indicated on their application form in the twelve months ending December 2007 that they intended to stay in the UK for less than three months.

Table 8 – Intended length of stay of registered workers, January 2007 – December 2007

Intended length of stay	Twelve months ending December 2007	Percentage
Less than 3 months	121,550	59%
3 to 5 months	3,450	2%
6 to 11 months	6,350	3%
1 to 2 years	8,645	4%
More than 2 years	16,465	8%
Do not know	50,505	24%
Total	206,965	100%

Extra care should be taken when using the above data as the applicants' situation may change significantly from the time when the application form is completed, which may affect their continued stay in the UK.

¹⁰ These data are derived from applicants' responses to the question on the WRS application form: *How many hours per week do you normally work?* The Home Office does not verify these responses.

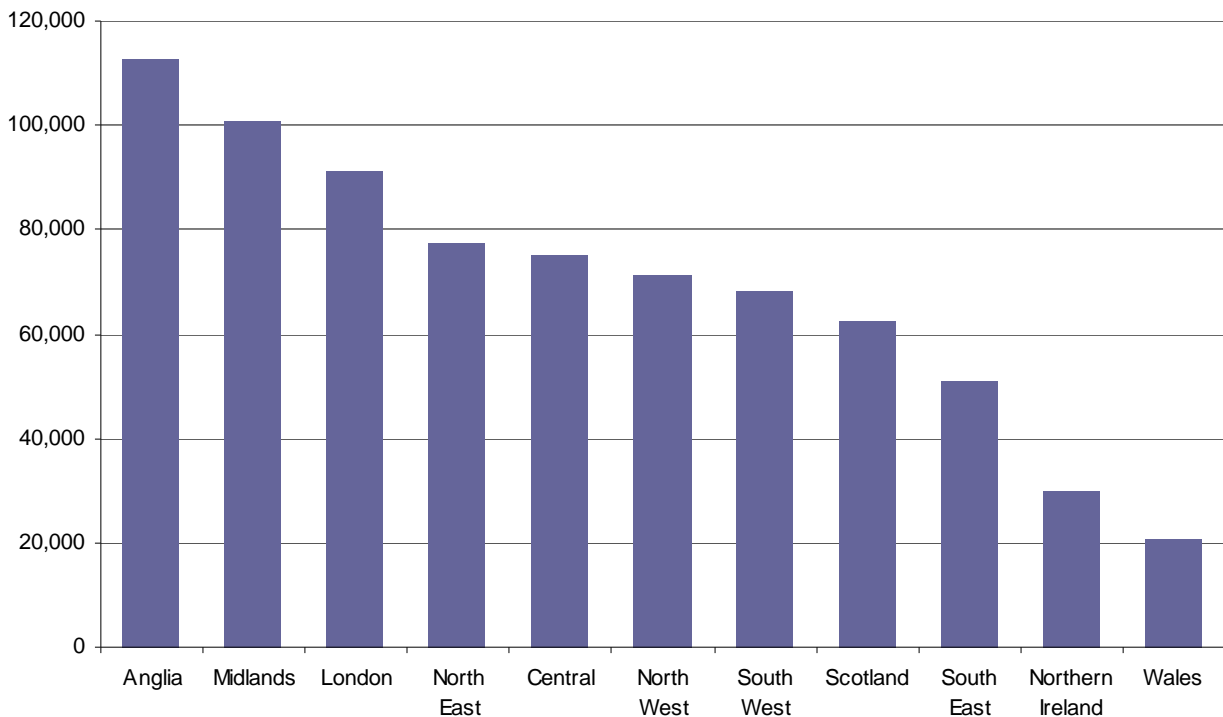
¹¹ These data are derived from applicants' responses to the question on the WRS application form: *How much is your hourly rate, before deductions?* The Home Office does not verify these responses.

¹² The 97% is likely to be an underestimate. The proportion of registered workers working part time is likely to be lower than 3%, because some were doing more than one part time job during the same period. The data published here take account of only one of those jobs – so the total hours an individual was working will in some cases be more than 16.

¹³ These data are derived from applicants' responses to the question on the WRS application form: *What type of employment are you undertaking?* The Home Office does not verify these responses.

10. Geographical distribution of employers of registered workers¹⁴

Chart 7 – Geographical distribution of employers of registered workers, May 2004 - December 2007



- Between May 2004 and December 2007, Anglia had the greatest number of workers registering with employers in the area, with 15% of the total. This is followed by the Midlands and London, with 13% and 12% of the workers registered. This compares with 14% for Anglia and the Midlands, and 10% each for the North East, London and the North West in the twelve months to December 2007.
- Northern Ireland and Wales had the fewest registrations between May 2004 and December 2007 with 4% and 3% respectively of the total.
- The proportion applying to London-based employers fell from 20% in 2004 to just 10% in Q4 2007. At the same time the proportion and number applying to work in most other areas has increased and, in the latest quarter, the highest proportion of workers was in the Midlands region and Anglia, both with 15% of workers registered in their area

¹⁴ Regions are based on the applicant's employer's postcode, where supplied. Regions are defined according to the Post Office's Postal Address Book regions.

Table 9 – Geographical distribution of employers of registered workers by quarter and year of application, May 2004 - December 2007

		Number of registered workers											
Period		Anglia	Midlands	London	North East	Central	North West	South West	Scotland	South East	Northern Ireland	Wales	Total ¹⁵
2004	Total	21,915	11,710	25,470	9,060	13,885	7,675	9,700	8,150	11,200	3,660	2,430	125,880
2005	Total	29,930	26,755	23,460	21,405	20,640	19,135	18,150	15,895	13,670	8,845	5,490	204,970
2006	Q1	6,435	6,325	5,090	5,280	4,975	4,715	3,995	3,485	2,780	2,040	1,415	46,765
	Q2	7,435	7,520	4,940	5,615	5,390	5,470	6,015	5,080	3,340	2,105	1,645	54,905
	Q3	8,600	9,305	5,430	7,170	5,580	6,740	6,165	5,580	3,735	2,305	1,905	62,855
	Q4	9,220	10,010	6,035	7,395	5,370	6,950	5,180	4,910	3,470	2,515	1,910	63,350
2006	Total	31,690	33,155	21,495	25,460	21,315	23,875	21,360	19,050	13,325	8,970	6,875	227,875
2007	Q1	6,785	6,885	5,440	5,015	5,025	4,835	4,405	4,555	3,220	2,355	1,580	50,305
	Q2	7,245	7,165	4,950	5,075	4,890	5,120	5,515	5,220	3,445	1,975	1,480	52,295
	Q3	8,320	7,910	5,495	6,180	5,195	5,785	5,065	5,610	3,550	2,185	1,460	57,040
	Q4	6,895	7,215	4,965	5,265	4,175	4,920	3,980	3,980	2,575	1,820	1,420	47,330
2007	Total	29,250	29,175	20,850	21,535	19,285	20,665	18,965	19,345	12,790	8,335	5,940	206,965

This table shows registered workers rather than the number of applications made. The figures are for initial applications only (not multiple applications, where an individual is doing more than one job simultaneously, or re-registrations, where an individual has changed employers).

The total shown for 2004 is for the part year May to December.

Please note that changes have been made to the way that regional information is recorded by refining the linkage to postcode information to ensure greater accuracy. This has resulted in changes to the data shown under some regions and 'Not stated' since the second Quarter 2004, but does not change the previously published totals.

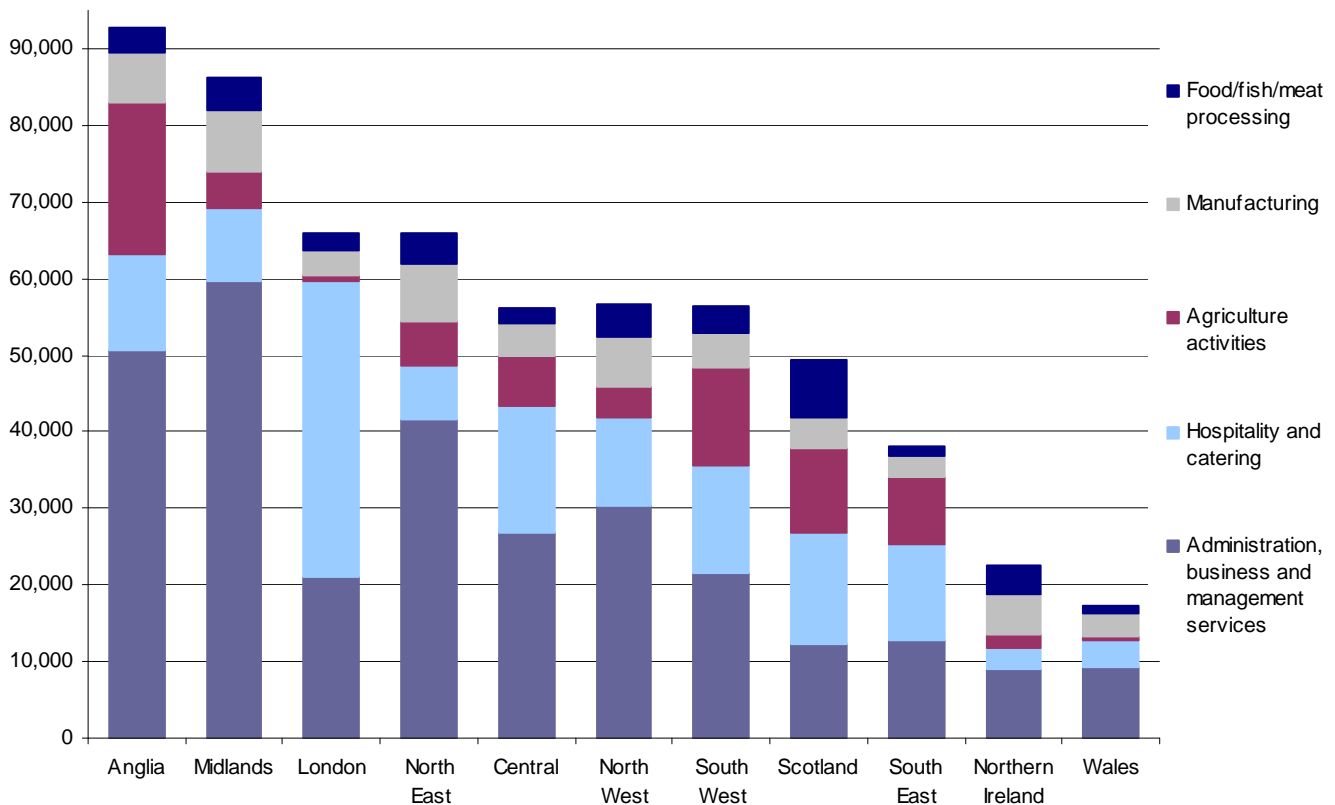
Regions are based on the applicant's employer postcode, where supplied. Regions are defined according to the Post Office's Postal Address Book regions.

Note: Please see Introduction: Technical Note on WRS data.

¹⁵ Applicants who did not state a postcode are included in the 'Total' column only.

11. Geographical distribution¹⁶ of employers of registered workers by sector¹⁷

Chart 8 – Top 5 sectors – geographical distribution of employers of registered workers, cumulative total, May 2004 – December 2007



Regional distribution within sectors, May 2004 – December 2007

- 27% of those working in hospitality and catering were working for employers in London – far more than in any other region. The next highest proportions were employed in Central England, Scotland and the South West (11%, 10% and 10% respectively).
- 26% of those working in agriculture were working for employers in Anglia, followed by the South West (17%), whereas only 1% were based in London or Wales.
- 20% of those working in administration, business and management were working for employers based in the Midlands, followed by 17% in Anglia and 14% in the North East.

Sector distribution within regions, May 2004 – December 2007

- 42% of those working for employers located in London were working in hospitality and catering, 25% in the South East and 24% in Scotland.
- 59% of those working for employers located in the Midlands were working in administration, business and management (including employment agencies), as were 54% of those in the North East, but only 23% in London and 20% in Scotland.
- 19% of those working for employers in the South West were working in agriculture, 17% in each of Anglia, Scotland and the South East

¹⁶ Regions are based on the applicant's employer's postcode, where supplied. Regions are defined according to the Post Office's Postal Address Book regions.

¹⁷ Not equivalent to the ONS Standard Industry Codes.

Table 10 – Top 10 Sectors – geographical distribution of employers of registered workers, cumulative total, May 2004 - December 2007

Sector	Number of registered workers											
	Anglia	Midlands	London	North East	Central	North West	South West	Scotland	South East	Northern Ireland	Wales	Total ¹⁸
Admin., business & management services	50,550	59,770	20,940	41,575	26,830	30,340	21,515	12,205	12,820	8,910	9,320	296,180
Hospitality & catering	12,525	9,335	38,605	6,985	16,580	11,545	14,160	14,710	12,495	2,880	3,505	144,450
Agriculture activities	19,880	4,770	740	5,920	6,460	4,035	12,770	10,885	8,895	1,810	570	77,245
Manufacturing	6,435	8,120	3,370	7,350	4,215	6,450	4,545	4,050	2,625	5,130	2,960	55,565
Food/fish/meat processing	3,245	4,115	2,140	4,045	2,090	4,180	3,460	7,450	1,370	3,920	825	37,070
Health & medical services	4,565	2,590	3,515	2,815	5,335	2,500	3,530	2,384	3,515	1,215	1,140	33,335
Retail & related services	5,240	3,205	7,315	2,240	3,410	3,055	2,115	1,990	2,535	1,155	565	33,120
Construction & land services	2,680	2,640	3,900	2,305	3,730	3,470	1,675	4,495	1,995	3,255	640	30,965
Transport	3,420	3,055	1,675	1,885	1,750	2,600	1,455	1,705	1,565	745	365	20,365
Entertainment & leisure services	1,265	1,005	1,925	740	1,460	1,520	1,460	775	960	105	445	11,740
Total in top 10 sectors	109,805	98,605	84,125	75,855	71,855	69,695	66,680	60,650	48,765	29,120	20,3335	740,035
Other/Not stated	2,985	2,190	7,145	1,605	3,265	1,655	1,495	1,795	2,220	685	400	25,650

This table shows registered workers rather than the number of applications made. The figures are for initial applications only (not multiple applications, where an individual is doing more than one job simultaneously, or re-registrations, where an individual has changed employers).

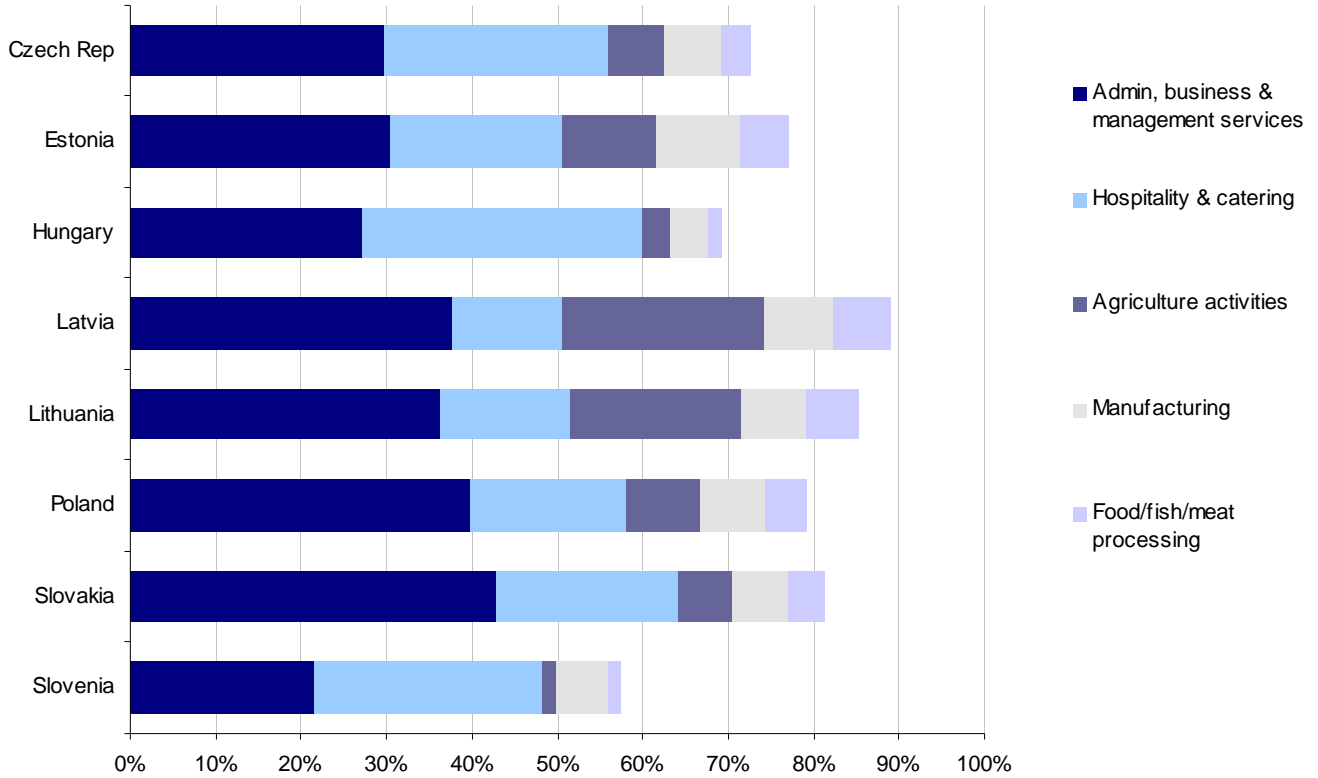
Regions are based on the applicant's employer postcode, where supplied. Regions are defined according to the Post Office's Postal Address Book regions

Note: Please see Introduction: Technical Note on WRS data.

¹⁸ Applicants who did not state a postcode are included in the 'Total' column only.

12. Nationality of registered workers by sector¹⁹

Chart 9 – Proportion of registered workers in the top 5 sectors by nationality, May 2004 - December 2007



- Between May 2004 and December 2007 a greater proportion of workers from Latvia and Lithuania worked in agriculture than any other nationality. 24% of Latvians and 20% of Lithuanians worked in agriculture compared to 10% of all workers.
- Polish workers made up the largest proportion in every sector between May 2004 and December 2007, with 68% registering to work in administration, business and management services (including employment agencies) and 64% in hospitality and catering.

¹⁹ Not equivalent to the ONS Standard Industry Codes.

Table 11 – Top 10 Sectors – Nationality of registered workers, cumulative total, May 2004 – December 2007

Sector	Number of registered workers								
	Czech Rep	Estonia	Hungary	Latvia	Lithuania	Poland	Slovakia	Slovenia	Total
Admin., business & management services	10,315	2,090	7,015	14,105	26,635	202,145	33,725	150	296,180
Hospitality & catering	9,020	1,380	8,410	4,745	11,120	92,745	16,840	185	144,450
Agriculture activities	2,240	755	880	8,825	14,675	44,770	5,095	10	77,245
Manufacturing	2,280	670	1,115	2,965	5,525	37,965	5,005	45	55,565
Food/fish/meat processing	1,250	390	430	2,530	4,500	24,480	3,480	10	37,070
Health & medical services	2,220	390	1,700	625	1,905	22,660	3,790	45	33,335
Retail & related services	1,775	320	1,405	930	2,355	22,855	3,410	65	33,120
Construction & land services	1,310	215	1,000	1,075	3,015	21,985	2,345	20	30,965
Transport	970	190	935	300	1,005	15,860	1,095	20	20,365
Entertainment & leisure services	1,075	155	935	460	895	6,780	1,430	20	11,740
Total in top 10 sectors	32,455	6,550	23,820	36,555	71,630	492,240	76,210	570	740,035
Other Occupations / Not stated	2,100	295	1,930	745	1,685	16,150	2,620	125	25,650

This table shows registered workers rather than the number of applications made. The figures are for initial applications only (not multiple applications, where an individual is doing more than one job simultaneously, or re-registrations, where an individual has changed employers).

The majority of workers in the administration, business & management sector work for recruitment agencies and could be employed in a variety of industries.

Note: Please see Introduction: Technical Note on WRS data.

A8 NATIONAL INSURANCE NUMBERS²⁰

13. National Insurance Numbers allocated and purpose of allocation, Great Britain²¹

- Between May 2004 and December 2007, the total number of National Insurance Number applications stood at an overall total of just under 819,000.
- 97.6% of National Insurance Numbers (NINOs) were allocated for employment purposes, 0.8% for benefit purposes and 1.6% for tax credit purposes.
- For the period 1st May 2004 to 31st December 2007, 55% of applicants were male and 45% were female. The percentage of 18-34 year olds was 82%.
- Most applications were from Polish (66%), Slovakian (10%) and Lithuanian (9%) nationals.

Table 12 – National Insurance Numbers allocated and refused, Great Britain, May 2004 - December 2007

Period		Total Allocated	Allocated for employment purposes	Allocated for benefit purposes	Allocated for tax credit purposes	Total Refused
2004	Total	63,479	62,539	588	352	1,611
2005	Total	221,818	218,521	1,649	1,648	2,354
2006	Q4	76,460	74,611	529	1,320	1,070
2006	Total	266,623	260,909	1,698	4,016	3,991
2007	Q1	71,655	68,782	738	2,135	754
	Q2	57,961	55,592	520	1,849	746
	Q3	67,908	66,281	469	1,158	1,124
	Q4	57,671	55,638	471	1,562	1,159
2007	Total	255,195	246,293	2,198	6,704	3,783
Total		807,115	788,262	6,133	12,720	11,739

Note: Figures include GB only.

Reporting periods are as follows.

- 2004 = 1 May - 31 December 2004.
- 2005 = 1 January 2005 - 31 December 2005.
- Q1 2006 = 1 January - 31 March 2006, Q2 2006 = 1 April - 30 June 2006, Q3 2006 = 1 July - 30 September 2006, Q4 2006 = 1 October - 31 December 2006.
- Q1 2007 = 1 January - 31 March 2007, Q2 2007 = 1 April - 30 June 2007, Q3 2007 = 1 July - 30 September 2007, Q4 2007 = 1 October - 31 December 2007

This table includes all identified claims from A8 nationals, and is not restricted to those required to register with the WRS.

²⁰ Source: Department for Work and Pensions management information from Jobcentre Plus, which is collated from clerical processes

²¹ MI on NINO allocations is sourced from a bespoke MI Tracker system collated from Jobcentre Plus offices across Great Britain. Comparable data for Northern Ireland is not available.

14. National Insurance Number applications by region, Great Britain

**Table 13 – National Insurance Numbers allocated and refused by region, Great Britain²².
May 2004 – December 2007.**

Region	2004 Total	2005 Total	2006	2006 Total	2007				2007 Total	TOTAL
			Q4		Q1	Q2	Q3	Q4		
London	20,816	58,197	16,838	61,785	18,858	15,784	15,235	15,464	65,341	206,139
South East	10,645	28,247	8,017	30,678	9,634	7,134	10,382	8,557	35,707	105,277
Scotland	3,701	20,581	8,468	27,663	7,000	6,393	8,260	6,161	27,814	79,759
North West	4,103	20,375	7,492	25,194	7,697	6,489	8,210	6,460	28,856	78,528
East of England	7,175	20,743	7,182	27,827	3,276	2,792	2,063	2,211	10,342	66,087
East Midlands	4,791	20,881	6,180	20,768	5,539	4,375	5,483	4,629	20,026	66,466
Yorks & Humber	2,467	11,598	5,873	19,541	7,112	6,067	6,068	5,334	24,581	58,187
West Midlands	4,027	16,055	5,980	21,435	4,820	2,778	3,545	2,719	13,862	55,379
South West	4,200	14,822	6,436	18,618	3,408	2,137	3,963	2,954	12,462	50,102
Wales	1,605	6,691	2,005	6,827	2,145	1,752	2,117	1,473	7,487	22,610
North East	569	2,782	1,217	5,128	1,206	1,009	1,299	1,223	4,737	13,216
Fast-track ²³	991	3,200	1,842	5,150	1,714	1,997	2,407	1,645	7,763	17,104
TOTAL	65,090	224,172	77,530	270,614	72,409	58,707	69,032	58,830	258,978	818,854

Note: Figures include GB only.

Reporting periods are as follows.

- 2004 = 1 May - 31 December 2004.
- 2005 = 1 January 2005 - 31 December 2005.
- Q1 2006 = 1 January - 31 March 2006, Q2 2006 = 1 April - 30 June 2006, Q3 2006 = 1 July - 30 September 2006, Q4 2006 = 1 October - 31 December 2006.
- Q1 2007 = 1 January - 31 March 2007, Q2 2007 = 1 April - 30 June 2007, Q3 2007 = 1 July - 30 September 2007, Q4 2007 = 1 October - 31 December 2007

Jobcentre Plus is currently divided into the eleven regions shown. A customer's postcode determines to which Jobcentre Plus local office and ultimately region s/he is allocated.

This table includes all identified claims from A8 nationals, and is not restricted to those required to register with the WRS.

²² MI on NINO allocations is sourced from a bespoke MI Tracker system collated from Jobcentre Plus offices across Great Britain. Comparable data for Northern Ireland is not available.

²³ Fast-track applications relate to highly skilled / specialist employment only. Specific regions are not applicable.

A8 BENEFITS AND TAX CREDITS

15. Applications for tax-funded, income-related benefits²⁴, Great Britain

- Table 14 shows applications for income-based Jobseeker's Allowance, Income Support and State Pension Credit.
- Between May 2004 and December 2007, there were 7,765 applications for Income Support, 13,622 for income-based Jobseeker's Allowance and 372 for State Pension Credit.
- 4,872 applications (including 377 allowed on reconsideration or appeal) were allowed to proceed for further consideration of whether the claimants meet the other conditions of entitlement.
- Although increasing, the numbers of A8 nationals applying for tax-funded income-related benefits and housing support remain low. For example, 11,992 applications for Income Support and Jobseeker's Allowance were processed in 2007, of which 3,004 were allowed to proceed for further consideration, compared to 6,171 and 1,562 in 2006 and 1,460 and 169 in 2005.
- In all, so far 22% of applications have been allowed and the majority (78%) were disallowed on the basis of the Right to Reside and Habitual Residence Tests.
- Most applications were from Polish (49%), Lithuanian (14%) and Czech (13%) nationals.

Table 14 – Applications for tax-funded, income-related benefits, Great Britain. May 2004 – December 2007

	2004 Total	2005 Total	2006	2006 Total	2007				2007 Total	TOTAL
			Q4		Q1	Q2	Q3	Q4		
Applications for Income Support										
Disallowed ²⁵	204	745	598	1,624	1,020	1,174	795	830	3,819	6,392
Allowed to proceed for further processing ²⁶	5	38	180	490	211	260	185	184	840	1,373
Total	209	783	778	2,114	1,231	1,434	980	1,014	4,659	7,765
Applications for Income based Jobseekers Allowance										
Disallowed ²⁵	537	1,546	773	2,985	1,574	1,675	964	956	5,169	10,237
Allowed to proceed for further processing ²⁶	18	131	362	1,072	637	676	397	454	2,164	3,385
Total	555	1,677	1,135	4,057	2,211	2,351	1,361	1,410	7,333	13,622
Applications for State Pension Credit										
Disallowed ²⁵	4	40	28	77	26	37	42	32	137	258
Allowed to proceed for further processing ²⁶	0	2	9	39	5	16	20	32	73	114
Total	4	42	37	116	31	53	62	64	210	372
Total disallowed²⁵	745	2,331	1,399	4,686	2,620	2,886	1,801	1,818	9,125	16,887
Total allowed to proceed for further processing²⁶	23	171	551	1,601	853	952	602	670	3,077	4,872
Total	768	2,502	1,950	6,287	3,473	3,838	2,403	2,488	12,202	21,759

Note: Figures include GB only

Reporting periods are as follows.

- 2004 = 1 May - 31 December 2004.
- 2005 = 1 January 2005 - 31 December 2005.
- Q1 2006 = 1 January - 31 March 2006, Q2 2006 = 1 April - 30 June 2006, Q3 2006 = 1 July - 30 September 2006, Q4 2006 = 1 October - 31 December 2006.
- Q1 2007 = 1 January - 31 March 2007, Q2 2007 = 1 April - 30 June 2007, Q3 2007 = 1 July - 30 September 2007, Q4 2007 = 1 October - 31 December 2007

This table includes all identified claims from A8 nationals, and is not restricted to those required to register with the WRS.

²⁴ Source: Department for Work and Pensions management information from Jobcentre Plus, which is collated from clerical processes

²⁵ On failing the Right to Reside and Habitual Residence Test.

²⁶ On passing the Right to Reside and Habitual Residence Test.

16. Nationality of applicants for tax-funded, income-related benefits²⁷, Great Britain

Table 15 – Applications for tax-funded, income-related benefits by nationality, Great Britain.
May 2004 – December 2007

Period	Czech Rep	Estonia	Hungary	Latvia	Lithuania	Poland	Slovakia	Slovenia	Total
2004 Total	246	23	23	42	84	262	82	6	768
2005 Total	435	51	117	209	345	1,017	319	9	2,502
2006 Q4	234	27	60	174	298	920	232	5	1,950
2006 Total	831	92	187	501	889	2,994	764	29	6,287
2007 Q1	361	33	107	291	465	1,774	435	7	3,473
Q2	375	59	143	260	547	2,055	390	9	3,838
Q3	225	22	75	189	350	1,311	225	6	2,403
Q4	276	37	101	184	352	1,263	267	8	2,488
2007 Total	1,237	151	426	924	1,714	6,403	1,317	30	12,202
Total	2,749	317	753	1,676	3,032	10,676	2,482	74	21,759

Note: Figures include GB only

17. Applications for tax-funded, income-related benefits²⁷ by region

Table 16 – Applications for tax-funded, income-related benefits by region, Great Britain.
May 2004 - December 2007

Region	2004 Total	2005 Total	2006	2006 Total	2007				2007 Total	Total
			Q4		Q1	Q2	Q3	Q4		
London	234	791	640	1,831	912	1,355	790	762	3,819	6,675
North West	125	319	184	673	397	386	221	261	1,265	2,382
Yorks & Humber	69	280	246	831	403	331	198	233	1,165	2,345
South East	85	206	186	537	317	364	289	257	1,227	2,055
East of England	44	213	147	561	314	303	174	215	1,006	1,824
East Midlands	32	156	126	458	300	276	252	176	1,004	1,650
West Midlands	47	174	131	448	274	251	153	208	886	1,555
Scotland	38	141	119	389	190	216	122	109	637	1,205
South West	22	78	58	194	133	145	93	133	504	798
North East	49	72	79	207	118	102	58	67	345	673
Wales	23	72	34	158	115	109	53	67	344	597
Total	768	2,502	1,950	6,287	3,473	3,838	2,403	2,488	12,202	21,759

Note: Figures include GB only

Reporting periods are as follows.

- 2004 = 1 May - 31 December 2004.
- 2005 = 1 January 2005 - 31 December 2005.
- Q1 2006 = 1 January - 31 March 2006, Q2 2006 = 1 April - 30 June 2006, Q3 2006 = 1 July - 30 September 2006, Q4 2006 = 1 October - 31 December 2006.
- Q1 2007 = 1 January - 31 March 2007, Q2 2007 = 1 April - 30 June 2007, Q3 2007 = 1 July - 30 September 2007, Q4 2007 = 1 October – 31 December 2007

Jobcentre Plus is currently divided into the eleven regions shown. A customer's postcode determines to which Jobcentre Plus local office and ultimately region s/he is allocated.

Tables 15 and 16 include all identified claims from A8 nationals, and are not restricted to those required to register with the WRS.

²⁷ Source: Department for Work and Pensions management information from Jobcentre Plus, which is collated from clerical processes

18. Applications for Child Benefit²⁸, UK

- During the period May 2004 to December 2007, 65% of applications were approved and 19% were rejected.
- There are cases where an application may be processed in a different month to that in which it was received and therefore the number of applications received will not total the number of approved and rejected applications. This is because once a Child Benefit application is made by an A8 national, the Child Benefit Office makes further enquiries about the applicant's date of arrival in the UK and employment status, in order to ascertain whether or not the applicant passes the right to reside test.
- The total number of children involved in applications approved in Quarter 4 2007 was 15,743.

Table 17 – Applications for Child Benefit, UK, May 2004 – December 2007

Period		Applications Received	Applications Approved	Applications Rejected ²⁹	Applications Terminated
2004	Total	5,089	2,086	907	23
2005	Total	22,490	10,363	3,162	197
2006	Q4	12,081	9,804	2,590	113
2006	Total	41,183	32,803	8,348	579
2007	Q1	17,813	12,405	3,308	167
	Q2	14,547	11,270	3,308	144
	Q3	18,063	9,923	3,285	142
	Q4	17,583	10,431	3,009	114
2007	Total	68,006	44,029	12,910	567
Total		136,768	89,281	25,327	1,366

This table includes all identified claims from A8 nationals, and is not restricted to those required to register with the WRS. The table shows counts of events occurring in each period, not the results of claims arriving in that period. If an A8 national appears in more than one claim then all his/her claims are included in this table.

The total shown for 2004 is for the part year May to December.

²⁸ Source: Management Information from HMRC Child Benefit Offices, which is collated from their clerical processes.

²⁹ Includes withdrawn claims.

19. Applications for Tax Credits³⁰, UK

- Between May 2004 and December 2007, 65% of applications for tax credits were approved and 10% were rejected.
- 25% of applications for tax credits, received during this period, are not yet decided as supplementary enquiries need to be made to establish a claimant's right to reside, which will mean that a claim may be decided in a different month to that in which it is received.

Table 18 – Applications for Tax Credits, UK, May 2004 – December 2007

Period		Applications Received	Applications Approved	Applications Rejected
2004	Total	940	252	185
2005	Total	7,090	4,544	619
2006	Q4	7,373	5,173	732
2006	Total	29,432	17,889	2,262
2007	Q1	9,476	8,064	1,351
	Q2	11,390	7,829	1,251
	Q3	9,377	6,069	1,123
	Q4	11,239	6,871	974
2007	Total	41,482	28,833	4,699
Total		78,944	51,518	7,765

This table includes all identified claims from A8 nationals, and is not restricted to those required to register with the WRS. The table shows counts of events occurring in each period, not the results of claims arriving in that period. If an A8 national appears in more than one claim then all his/her claims are included in this table.

The total shown for 2004 is for the part year May to December.

³⁰ Source: Management Information from HMRC Tax Credit Offices, which is collated from their clerical processes.

A8 HOUSING AND HOMELESSNESS SUPPORT³¹

20. Homelessness assistance³², England

- The May 2004 to September 2007³³ total of 2,900 decisions on A8 applications for homelessness assistance represents 0.4% of the total number of homelessness decisions over the 41-month period.

Table 19 – Decisions on applications for assistance^{34,35}, England, May 2004 – September 2007

Period		Main duty owed to Applicant	Applicant not owed a main duty	Total
2004	Total	178	277	455
2005	Total	208	385	593
2006	Q4	90	121	211
2006	Total	319	625	944
2007	Q1	98	182	280
	Q2	90	156	246
	Q3	128	254	382
Total		1,021	1,879	2,900

- The May 2004 to September 2007, total of 1,021 A8 acceptances represents 0.3% of the total number of acceptances of homelessness applications over the 41-month period.

Table 20 – Homeless households owed a main duty by reason for eligibility, England, May 2004 – September 2007

Period		Currently legally employed	Self-employed/ provider of services	Recipient of services ³⁶	Other	Total
2004	Total	123	6	2	47	178
2005	Total	152	5	2	49	208
2006	Q4	73	1	-	16	90
2006	Total	249	4	-	66	319
2007	Q1	83	7	-	8	98
	Q2	79	1	-	10	90
	Q3	100	4	-	24	128
Total		786	27	4	204	1,021

The total, shown for 2004 in tables 19 and 20, is for the part year May to December.

Tables 19 and 20 includes all identified claims from A8 nationals, and is not restricted to those required to register with the WRS.

³¹ Communities and Local Government; management information provided by Local Housing Authorities, with some imputation for missing data.

³² Estimates are made for non-response by Local Authorities on homelessness assistance.

³³ Data currently collected on Communities and Local Government's P1E form, and only available up to September 2007.

³⁴ Under the homelessness provisions of the 1985 and 1996 Housing Acts.

³⁵ 'Main duty owed' means that the local authority is required to secure accommodation for the applicant and his/her household.

³⁶ No longer valid after Q2 2006.

21. Social housing lettings, England

Data on local authority and Registered Social Landlord lettings to A8 nationals are provided by the Continuous Recording of Social Lettings (CORE). This records all lettings made by housing associations and an increasing number of local authorities. The question on nationality was added to the CORE form in 2006/07. For more details, see the CORE website: www.core.ac.uk

ANNEX A

ALL OCCUPATIONS IN WHICH REGISTERED WORKERS ARE EMPLOYED, TOTAL JULY 2004 – DECEMBER 2007 (MAY AND JUNE 2004 UNAVAILABLE)

Occupation (In alphabetical order)	Total July 2004 to December 2007
Accountant, certified	40
Accountant, chartered	10
Accountant, financial	220
Accountant, trainee	235
Actor	5
Actuary	10
Administrator, utilities	45
Administrator / receptionist, medical	335
Administrator, government & related	75
Administrator, communications / marketing / advertising	655
Administrator, finance	1,215
Administrator, financial services	350
Administrator, general	6,150
Administrator, hospital	75
Administrator, Human Resources	585
Administrator, IT	545
Administrator, office	2,540
Administrator, records	455
Administrator, sports and leisure	155
Administrator, university	100
Agricultural machinery operator	1,515
Air steward / stewardess	330
Airport staff	610
Alternative/complementary medicine specialist	25
Anaesthetist	145
Animal husbandry	810
Architect	445
Architectural technician	535
Artist / sculptor	105
Arts officer, producers or director	65
Auditor	65
Author, writer	10
Baker	3,460
Bank manager	20
Banker, business	45
Banker, international	25

Banker, investment	55
Banker, merchant	10
Banker, personal	30
Bar staff	9,600
Barrister	40
Beautician	255
Bricklayer / mason	1,785
Butcher / meat cutter	2,780
Call centre agent / operator	870
Camera person / photographer	70
Care assistants and home carers	20,015
Caretaker, school	135
Carpenter / joiner	5,630
Caseworker (legal)	15
Cashier (bank, building society)	180
Cashier / check-out operator	1,985
Caterer, higher education	20
Caterer, school	60
Chef, head	680
Chef, other	8,090
Chef, second	380
Chemical engineer	225
Childminders and related occupations	1,255
Chiropodist	†
Circus performer	15
Circus rigger	85
Civil engineer	675
Cleaner, domestic staff	39,290
Cold store operative	95
Conductor, railway	15
Conductor, bus	35
Construction materials delivery	195
Constructor, road	280
Constructor, roofing	285
Constructor, steel	1,150
Consultant, hospital	225
Crop harvester	12,620
Dancer or choreographer	15
Deliveryman	495
Dental hygienist	70
Dental nurse	365
Dental practitioner	370
Detention / custody guard / officer	10

Dietician	†
Director / senior executive	240
Dock worker	65
Doctor (hospital)	730
Driver, bus	3,110
Driver, coach	195
Driver, crane	105
Driver, delivery van	4,805
Driver, fork-lift	1,125
Driver, HGV (Heavy Goods Vehicle)	6,060
Driver, PCV (Passenger Carrying Vehicle)	1,370
Driver, taxi	90
Driver, train	5
Driver, underground	†
Electrician	830
Engineer, electrical	310
Engineer, gas	25
Engineer, hardware (computer)	345
Engineer, oil and natural gas	110
Engineer, other transport-related	555
Engineer, railway	75
Engineer, software	695
Engineer, water	30
Entertainer	450
Farm worker / farm hand	30,810
Financial adviser	155
Financial consultant	240
Fisherman	60
Fishmonger / filleter / gutter	1,350
Fitness coach	115
Floorer and wall tiler	270
Flower picker	1,305
Food processing operative (fruit / vegetable)	9,520
Food processing operative (meat)	8,730
Foreign language teacher (private)	40
Forestry workers	175
Fruit picker (farming)	6,230
Gardener / landscape gardener	2,225
General Practitioner	120
Groundsman	670
Hairdresser or related occupation	485
Handyman, general (building and contracting)	2,505

Hotel porter	4,120
Interpreter	35
IT strategy and planning professionals	225
Kitchen and catering assistants	42,295
Laboratory assistant	440
Labourer, building	20,680
Launderer, dry cleaner, presser	3,975
Lawyer / solicitor	65
Legal clerk	70
Legal secretary	30
Leisure and theme park attendants	2,760
Leisure and travel service occupations	820
Lifeguard	105
Maid / Room attendant (hotel)	25,210
Maintenance (electrical)	260
Maintenance (gas)	25
Maintenance (water/sewage)	35
Management accountant	70
Manager, bar	205
Manager, care home	35
Manager, catering	500
Manager, customer care	330
Manager, entertainment /arts /leisure	125
Manager, farm	55
Manager, financial	255
Manager, health and social services	110
Manager, hotel	235
Manager, Human Resources / Training	195
Manager, IT	125
Manager, office	610
Manager, other hospitality	455
Manager, quality	195
Manager, restaurant	320
Manager, retail	545
Manager, safety and hygiene	75
Manager, utilities	25
Market and street traders and assistants	75
Mechanic	3,065
Mechanical engineer	1,045
Merchandisers and window dressers	145
Midwife	5
Musicians	70

Nurse	365
Nursery nurse	510
Nursing auxiliaries and assistants	485
Optician	60
Packer	43,835
Painter and decorator	1,825
Personal assistant	830
Pharmacist / pharmacologist	600
Physiologist	10
Physiotherapist	60
Pilot (aircraft)	5
Plasterer	445
Playgroup leader / assistant	260
Plumber, heating and ventilating engineer	535
Policeman/woman	5
Power station staff	20
Prison officer	5
Process operative (electronic equipment)	3,445
Process operative (other factory worker)	197,845
Process operative (textiles)	3,045
Process operative (vehicle manufacturing)	1,220
Production manager	210
Programmer, computer	470
Property sales and lettings	145
Psychiatrist	45
Psychologist	15
Purchaser (retail trade)	225
Receptionist, office	1,235
Receptionist, hotel	2,065
Refuse and salvage occupation	1,105
Researcher, medical	340
Researcher, higher education	470
Residential warden, house parent	225
Retailer	470
Road sweeper	550
Roofer, roof tiler or slater	170
Sales or retail assistant	20,325
School secretary	30
Secretary	445
Secure delivery worker	50
Security guard	2,145

Senior manager	65
Sewage worker	25
Shelf stacker	440
Ship hand	85
Ship's captain	5
Site manager (construction)	210
Site manager (extraction industry)	10
Site supervisor (construction)	250
Site supervisor (extraction industry)	30
Skilled machine operator (construction)	1,470
Skilled machinery operator (extraction)	525
Skilled vehicle operator (construction)	125
Slaughterer, meat	410
Social worker	355
Software analyst	245
Sports and leisure assistant	810
Sports coach	30
Sports manager	5
Sportsperson (professional)	70
Steward / stewardess (ferry/shipping)	85
Supervisor (gas/water/electric)	15
Supervisor, door / bouncer	55
Supervisor, production	535
Supervisor, retail	400
Supplier, construction materials	65
Surgeon	75
Surveyor	200
Systems analyst	255
Teacher, higher education	255
Teacher, primary and nursery education	175
Teacher, secondary education	140
Teacher, special needs education	85
Teacher's assistant	890
Technician, medical	280
Telecommunications administrator	115
Telecommunications engineer	205
Telecommunications manager	20
Telecommunications supervisor	10
Telephone salesperson	155
Telesales Supervisor	25
Ticketeer or station attendant	165
Translator	110
Tutor (private)	50

Typist	90
Veterinarian	165
Waiter, waitress	26,090
Ward Sister	15
Warden (care home)	55
Warehouse manager	310
Warehouse operative	59,070
Warehouse supervisor	465
Water works staff	30
Welder	5,075
Wholesaler	30
Window cleaner	140
Worker, gas	10
Worker, oil	25
Not stated	10,840
Total	716,045